



INNOVATION
FOR LIFE

PURE

LIGHTING

2025 PRODUCT CATALOGUE

PURE
LIGHTING



INNOVATION FOR LIFE

purelighting.co.nz | pureinnovate.com.au

ABOUT US

Founded in 2013, Pure Lighting is a New Zealand / Australian owned family business, operating across Australasia. From our humble beginnings, we have grown into a premier distributor of LED lighting and the leading sports lighting specialist. Leveraging our extensive electrical industry experience, we deliver high-quality products and tailored solutions that meet the unique needs of our customers. As the fastest-growing lighting company in New Zealand, we lead the industry in product innovation and smart technology.

Our comprehensive product range includes residential, commercial, industrial, emergency, sports, and urban lighting, as well as lighting poles. Each product is manufactured to meet AS/NZS standards, ensuring quality and reliability. We source and manufacture lighting solutions globally and distribute them through all major wholesalers.

At the heart of our business is a customer-centric philosophy that shapes everything we do. This commitment has been instrumental to our success, creating trust and confidence in our relationships and ensuring exceptional service at every stage.

Vision

To be the most trusted lighting company in Australasia.

Mission

Growth through value delivery and customer education.

Our Strategy

Our strategy for growth is founded upon the relationships we foster with our partners, which is supported by three essential pillars: Quality and Performance, Service, and Our People.

Our Core Values

- **Accountability:** We do what we say we will do.
- **Integrity:** We trust that by doing the right things, we will achieve the right results.
- **Passion:** We strive to be the best at what we do.
- **Innovation:** Deliver customer value through continuous improvements.
- **Partnership:** We foster long-lasting, win-win relationships.

LIGHTING DESIGN

At Pure, we specialise in bespoke lighting design with an in-house team of lighting designers experienced across residential, commercial, industrial, emergency, urban, and sports lighting. When choosing light fittings, it's not just about the visual appearance but also the lighting effects they create. Lighting can set the mood, impact productivity, and highlight beautiful architecture. It shapes our understanding of form, space, and material and influences our senses, emotions, health, and well-being.

We deliver creative, energy-efficient lighting solutions for every project.

Residential Lighting

Lighting in a home sets the mood and affects the perceived size of a room. Proper placement and appropriate light fittings are crucial for interior design. The right lighting can transform a space into a perfect blend of functionality and style.

Commercial & Industrial Projects

Large-scale projects, such as offices and warehouses require careful planning to achieve appropriate lighting levels and ensure compliance with safety standards. We provide comprehensive lighting design, supporting every stage from conception to installation.

Emergency Lighting

The primary purpose of emergency escape lighting is to illuminate escape routes and any safety equipment. The complexity of the required lighting depends on your premises' size, type, and risk to occupants. Emergency lighting applies to classrooms, changing rooms, toilets, storerooms, reception areas, corridors, offices, stairwells, and more. We ensure safety standards are met and emergency systems are appropriately designed.

Sports Lighting

Well-designed sports lighting is essential. Our designer is familiar with council regulations and New Zealand and Australia standards. We create bespoke solutions that elevate the experience for athletes and spectators. By understanding the specific lighting needs of each sport and level of play, we ensure every solution meets technical specifications and visual demands.

Urban Lighting

Urban lighting shapes a city's nighttime atmosphere, making public spaces visible, accessible, and safe. It enhances the aesthetic and social experience of urban areas, contributing to a vibrant and welcoming environment.

CONTENTS

DOWNLIGHTS

- 8 PURE 8W Downlight
- 9 PURE Eco Range Downlights
- 12 PURE Platinum Range Downlights
- 15 PURE Low Glare Downlight
- 16 PURE Eco Gimbal Downlight
- 17 PURE Platinum Gimbal Downlight
- 18 PURE Fire Rated Downlight
- 19 PURE Luxe Downlights

OYSTER LIGHTS

- 22 PURE Eco Oyster Lights
- 24 PURE Oyster Lights
- 26 PURE Platinum Oyster Lights
- 29 PURE Luxe Oyster Lights

TRACK RANGE

- 32 PURE 48V Linear Track Lights
- 34 PURE 48V Spot Lights
- 36 PURE 48V Track Pendants
- 38 PURE 48V Track Accessories
- 40 PURE 3-Circuit Track Spot Lights
- 42 PURE 3-Circuit Track and Accessories

INDOOR SPOTLIGHTS

- 46 PURE Indoor Spotlights

PENDANT LIGHTS

- 53 PURE Pendant Lights
- 54 PURE Luxe Pendant Lights

INDOOR WALL AND MIRROR LIGHTS

- 58 PURE Reading Lights
- 60 PURE Rotatable Wall Lights
- 61 PURE Oval Wall Lights
- 62 PURE Wave Wall Lights

- 64 PURE Square / Curved Wall Lights

- 66 PURE Mirror Lights

- 68 PURE Up / Down Mirror Lights

INDOOR STEP LIGHTS

- 72 PURE Indoor Step Lights
- 73 PURE Indoor Step Light Faceplate Options

OUTDOOR SPOTLIGHTS

- 76 PURE Outdoor Spot Lights
- 81 PURE Luxe Spot Lights

OUTDOOR WALL LIGHTS

- 86 PURE Adjustable Wall Lights
- 87 PURE Rectangle Wall Lights
- 88 PURE Round Wall Lights
- 89 PURE Low Profile Wall Lights
- 90 PURE Cone Wall Lights
- 92 PURE Urban Square Wall Lights
- 93 PURE Urban Rectangle Wall Lights
- 94 PURE Eco Bunker Lights
- 96 PURE Platinum Bunker Lights

OUTDOOR STEP LIGHTS

- 100 PURE Outdoor Step Lights

BOLLARD LIGHTS

- 108 PURE Bollard Lights

BATTENS AND UNDERVERANDAHS

- 112 PURE Eco Batten Lights
- 113 PURE Elite Batten Lights
- 114 PURE Eco Wide Body Batten Lights
- 115 PURE Platinum Wide Body Batten Lights
- 116 PURE Slimline Batten Lights
- 117 PURE Slimline Underverandah Light

PANEL LIGHTS

- 120 PURE Clean Room Panel Lights
- 121 PURE High Output Panel Light
- 122 PURE 4000K Panel Lights
- 123 PURE CCT Selectable Panel Lights
- 124 PURE 4000K Low Glare Panel Lights
- 125 PURE Panel Accessories

FLOODLIGHTS

- 128 PURE Residential Floodlights
- 132 PURE Eco Floodlights
- 134 PURE Slimline Floodlights
- 136 PURE Platinum Floodlights

STREET LIGHTS

- 141 Legacy Invictus Street Light
- 142 PURE Eco Street Lights
- 144 PURE Platinum Street Lights
- 147 PURE Post Top Lights

SPORTS LIGHTS

- 152 Legacy Invictus Sports Lights
- 154 PURE Platinum Sports Lights
- 156 PURE Court Sports Lights

LIGHT POLES

- 162 PURE Light Poles

HIGH BAY LIGHTS / CANOPY LIGHTS

- 166 PURE Eco High Bay
- 167 PURE Eco Selectable High Bay
- 168 PURE Platinum CCT Selectable High Bay
- 169 PURE Eco Linear High Bay
- 170 PURE Linear High Bay
- 171 PURE Platinum Linear High Bay
- 173 PURE Canopy Light

EMERGENCY RANGE

- 176 PURE Exit Lights
- 177 PURE Jumbo Exit Light
- 178 PURE IP Rated Exit Light
- 179 PURE Emergency Lights
- 180 PURE IP Rated Emergency Lights
- 181 PURE Emergency Spot Light
- 182 PURE Emergency Batten Lights
- 183 PURE Emergency Oyster Light
- 184 PURE Emergency High Bay Driver
- 185 PURE Emergency Panel Driver

WIRELESS SWITCHES

- 188 PURE Wireless Switches



DOWNLIGHTS

Discover the perfect blend of style and functionality with our range of downlights. Renowned for their energy efficiency and long lifespan, downlights are a popular choice for any setting. We offer a variety of options in different colour temperatures, fitting colours, and sizes, ensuring you find the ideal solution for every application.

- 8 PURE 8W Downlight
- 9 PURE Eco Range Downlights
- 12 PURE Platinum Range Downlights
- 15 PURE Low Glare Downlights
- 16 PURE Eco Gimbal Downlight
- 17 PURE Platinum Gimbal Downlight
- 18 PURE Fire Rated Downlight
- 19 PURE Luxe Downlights

PURE DOWNLIGHT RANGE

Tricolour CCT Selectable LED Downlight



8W Downlight
Recessed Diffuser
PL8WDL



QUICK CONNECT
for hardwire
installation



10W Eco Downlight
Recessed Diffuser
PLER10WD

PURE ECO RANGE

Tricolour CCT Selectable LED Downlights

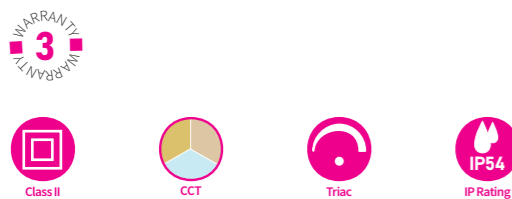
FEATURES

- Compact design with built-in driver
- Plastic coated aluminium housing
- IC-F/IC-4 rated covered and abutted
- CCT selectable 3000K, 4000K, 5700K
- Triac dimmable
- Quick connect for hardwire installation
- 3-year warranty

CERTIFICATIONS



PRODUCT INFORMATION



TECHNICAL SPECIFICATIONS

Product	8W Downlight
Ordering Code	PL8WDL
Power (W)	8
Colour Temperature (K)	3000 / 4000 / 5700
Lumen Output (lm)	660-800
CRI	>80
Beam Angle	100°
Dimming	Triac Dimming
LED Type	SMD
IP Rating	IP54 (front) / IP20 (back)
IK Rating	-
Input Voltage	220-240V AC
Electrical Class	Class II
Power Factor	0.9
Operating Temperature	-20°~40°C
Lifetime (hr)	50,000
Installation	Recessed
Dimensions (mm)	Ø106 x 48
Cutout (mm)	Ø90-95
Fitting Colour	White

FEATURES

- Compact design with built-in driver
- Plastic coated aluminium housing with PC diffuser
- IC-F/IC-4 rated covered and abutted
- CCT selectable 3000K, 4000K, 5700K
- Triac dimmable
- Flex and plug
- 3-year warranty

CERTIFICATIONS

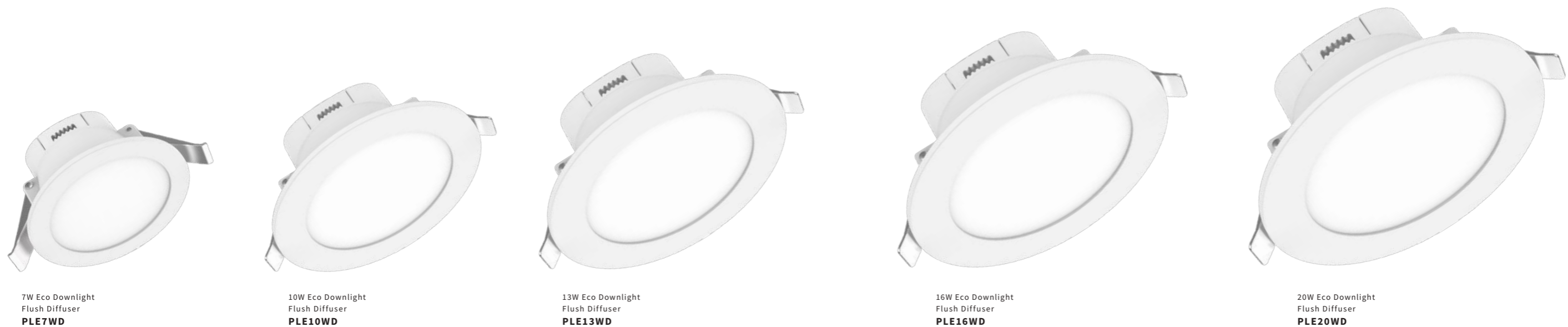


PRODUCT INFORMATION



TECHNICAL SPECIFICATIONS

Product	Eco -Recessed Diffuser
Ordering Code	PLER10WD
Power (W)	10
Colour Temperature (K)	3000 / 4000 / 5700
Lumen Output (lm)	800-940
CRI	>80
Beam Angle	90°
Dimming	Triac Dimming
LED Type	SMD
IP Rating	IP54 (front) / IP40 (back)
IK Rating	-
Input Voltage	220-240V AC
Electrical Class	Class II
Power Factor	0.9
Operating Temperature	-20°~45°C
Lifetime (hr)	40,000
Installation	Recessed
Dimensions (mm)	Ø115 x 61
Cutout (mm)	Ø90-95
Fitting Colour	White



7W Eco Downlight
Flush Diffuser
PLE7WD

10W Eco Downlight
Flush Diffuser
PLE10WD

13W Eco Downlight
Flush Diffuser
PLE13WD

16W Eco Downlight
Flush Diffuser
PLE16WD

20W Eco Downlight
Flush Diffuser
PLE20WD

PURE ECO DOWNLIGHTS

Pure Eco Downlights are an advanced lighting solution designed to provide efficient and high-quality illumination across various environments, including residential, commercial, and hospitality settings. These downlights are available in multiple wattages, such as 10W, 13W, 16W, and 20W, catering to different lighting requirements.

One of the standout features of Pure Eco Downlights is their energy efficiency. They are engineered to consume less power while delivering a high lumen output, making them an environmentally friendly choice. Additionally, all models come with CCT (Correlated Color Temperature) switching, allowing users to choose between 3000K, 4000K, or 5700K to suit their lighting preferences. This flexibility ensures that the lighting can be tailored to create the desired ambiance in any space.

These downlights also support triac dimming, which enables users to adjust the brightness levels according to their needs, providing both functionality and comfort. With a robust construction and a lifespan of up to 40,000 hours, Pure Eco Downlights are built to last, reducing the need for frequent replacements and maintenance.

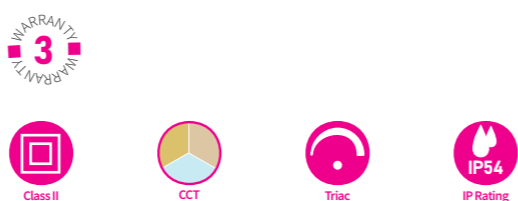
FEATURES

- Plastic coated aluminium housing built-in driver
- IC-F/IC-4 rated covered and abutted
- CCT selectable 3000K, 4000K, 5700K
- Flicker free, triac dimmable driver
- Flex and plug

CERTIFICATIONS



PRODUCT INFORMATION



TECHNICAL SPECIFICATIONS

Product	Eco - Flush Diffuser				
	PLE7WD	PLE10WD	PLE13WD	PLE16WD	PLE20WD
Ordering Code	PLE7WD	PLE10WD	PLE13WD	PLE16WD	PLE20WD
Power (W)	7	10	13	16	20
Colour Temperature (K)	3000 / 4000 / 5700	3000 / 4000 / 5700	3000 / 4000 / 5700	3000 / 4000 / 5700	3000 / 4000 / 5700
Lumen Output (lm)	550-620	800-880	1050-1210	1520-1840	1820-2200
CRI	>80	>80	>80	>80	>80
Beam Angle	90°	90°	90°	90°	90°
Dimming	Triac Dimming	Triac Dimming	Triac Dimming	Triac Dimming	Triac Dimming
LED Type	SMD	SMD	SMD	SMD	SMD
IP Rating	IP54 (front) / IP40 (back)	IP54 (front) / IP40 (back)	IP54 (front) / IP40 (back)	IP54 (front) / IP40 (back)	IP54 (front) / IP40 (back)
IK Rating	-	-	-	-	-
Input Voltage	220-240V AC	220-240V AC	220-240V AC	220-240V AC	220-240V AC
Electrical Class	Class II	Class II	Class II	Class II	Class II
Power Factor	0.9	0.9	0.9	0.9	0.9
Operating Temperature	-20°~45°C	-20°~45°C	-20°~45°C	-20°~45°C	-20°~45°C
Lifetime (hr)	40,000	40,000	40,000	40,000	40,000
Installation	Recessed	Recessed	Recessed	Recessed	Recessed
Dimensions (mm)	Ø85 x 55	Ø115 x 61	Ø145 x 62.5	Ø190 x 76	Ø225-84
Cutout (mm)	Ø70-75	Ø90-95	Ø120-130	Ø160-170	Ø200-210
Fitting Colour	White	White	White	White	White

PURE PLATINUM RANGE

Tricolour CCT Selectable LED Downlights



8W Platinum Downlight
Recessed Diffuser
PLP8WDB



12W Platinum Downlight
Recessed Diffuser
PLP12WDB



18W Platinum Downlight
Recessed Diffuser
PLP18WDB



25W Platinum Downlight
Recessed Diffuser
PLP25WDB



QUICK CONNECT
for hardwire
installation

PURE PLATINUM DOWNLIGHTS

Pure Platinum Downlights are an exceptional lighting solution that seamlessly combines modern design with advanced functionality. These downlights are available in various wattages, from 8W to 25W, and feature selectable colour temperatures of 3000K, 4000K, and 5700K, allowing users to tailor the lighting to their specific needs and preferences. With a lifespan of over 50,000 hours, they are engineered for durability, significantly reducing the frequency of replacements and maintenance costs.

The sleek, recessed design of the Pure Platinum Downlights enhances the aesthetic appeal of any space, making them ideal for both residential and commercial environments. Their 100° beam angle ensures broad and even light distribution, effectively illuminating larger areas without harsh shadows. Additionally, the downlights are rated IP54, providing protection against dust and moisture, which makes them suitable for use in kitchens, bathrooms, and outdoor covered areas.

Installation is straightforward, thanks to their lightweight construction and installation options, which eliminates the need for external components. The triac dimming capability allows users to easily adjust the brightness, creating the perfect ambiance for any occasion, whether it's a cozy dinner or a vibrant gathering.

FEATURES

- Great colour rendering
- Plastic coated aluminium housing with external driver
- IC-F/IC-4 rated covered and abutted
- CCT selectable 3000K, 4000K, 5700K
- Flicker free, triac dimmable driver
- Quick connect installation & flex and plug

CERTIFICATIONS



PRODUCT INFORMATION



TECHNICAL SPECIFICATIONS

Product	Platinum - Recessed Diffuser			
	PLP8WDB	PLP12WDB	PLP18WDB	PLP25WDB
Ordering Code	PLP8WDB	PLP12WDB	PLP18WDB	PLP25WDB
Power (W)	8	12	18	25
Colour Temperature (K)	3000 / 4000 / 5700	3000 / 4000 / 5700	3000 / 4000 / 5700	3000 / 4000 / 5700
Lumen Output (lm)	760-880	1100-1300	1800-2000	2500-2700
CRI	>90	>90	>90	>90
Beam Angle	100°	100°	100°	100°
Dimming	Triac Dimming	Triac Dimming	Triac Dimming	Triac Dimming
LED Type	SMD	SMD	SMD	SMD
IP Rating	IP54 (front) / IP40 (back)	IP54 (front) / IP40 (back)	IP54 (front) / IP40 (back)	IP54 (front) / IP40 (back)
IK Rating	-	-	-	-
Input Voltage	220-240V AC	220-240V AC	220-240V AC	220-240V AC
Electrical Class	Class II	Class II	Class II	Class II
Power Factor	0.9	0.9	0.9	0.9
Operating Temperature	-20°~40°C	-20°~45°C	-20°~45°C	-20°~45°C
Lifetime (hr)	50,000	50,000	50,000	50,000
Installation	Recessed	Recessed	Recessed	Recessed
Dimensions (mm)	Ø110 x 36	Ø145 x 46	Ø190 x 46	Ø235 x 46
Cutout (mm)	Ø90-100	Ø120-130	Ø160-170	Ø200-210
Fitting Colour	White	White	White	White

PURE PLATINUM RANGE

Tricolour CCT Selectable LED Downlight



8W Downlight
Flush Diffuser
PLP8WDA



9W Low Glare Downlight
Deep Recessed Diffuser
PLSD9W



11W Low Glare Downlight
Deep Recessed Diffuser
PLSD11W



QUICK CONNECT
for hardwire
installation

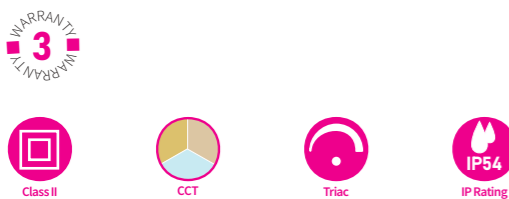
FEATURES

- Great colour rendering
- Plastic coated aluminium housing with external driver
- IC-F/IC-4 rated covered and abutted
- CCT selectable 3000K, 4000K, 5700K
- Flicker free, triac dimmable
- Quick connect installation & flex and plug

CERTIFICATIONS



PRODUCT INFORMATION



TECHNICAL SPECIFICATIONS

Product	Platinum - Flush Diffuser	
Ordering Code	PLP8WDA	
Power (W)	8	
Colour Temperature (K)	3000 / 4000 / 5700	
Lumen Output (lm)	760-880	
CRI	>90	
Beam Angle	100°	
Dimming	Triac Dimming	
LED Type	SMD	
IP Rating	IP54 (front) / IP20 (back)	
IK Rating	-	
Input Voltage	220-240V AC	
Electrical Class	Class II	
Power Factor	0.9	
Operating Temperature	-20°~40°C	
Lifetime (hr)	50,000	
Installation	Recessed	
Dimensions (mm)	Ø110 x 30	
Cutout (mm)	Ø90-100	
Fitting Colour	White	

FEATURES

- Compact design with external driver
- Plastic coated aluminium housing with PC diffuser
- IC-F/IC-4 rated covered and abutted
- CCT selectable 4000K, 5700K
- Triac dimmable
- Quick connect for hardwire installation
- 3-year warranty

CERTIFICATIONS



PRODUCT INFORMATION



TECHNICAL SPECIFICATIONS

Product	Low Glare Downlights	
Ordering Code	PLSD9W	PLSD11W
Power (W)	9	11
Colour Temperature (K)	4000 / 5700	4000 / 5700
Lumen Output (lm)	1000-1200	1200-1500
CRI	>90	>90
Beam Angle	60°	60°
Dimming	Triac Dimming	Triac Dimming
LED Type	SMD	SMD
IP Rating	IP54 (front) / IP40 (back)	IP54 (front) / IP40 (back)
IK Rating	-	-
Input Voltage	220-240V AC	220-240V AC
Electrical Class	Class II	Class II
Power Factor	0.9	0.9
Operating Temperature	-20°~40°C	-20°~40°C
Lifetime (hr)	50,000	50,000
Installation	Recessed	Recessed
Dimensions (mm)	Ø145 x 55	Ø170 x 58
Cutout (mm)	Ø120-130	Ø140-150
Fitting Colour	White / Silver	White / Silver

PURE ECO RANGE
Tricolour CCT Selectable Gimbal LED Downlight



9W Downlight
Gimbal 25° Tilt
PLP9WG

PURE PLATINUM RANGE
Tricolour CCT Selectable Gimbal LED Downlight



13W Platinum Downlight
Gimbal 25° Tilt
PLE13WG

FEATURES

- 25° tilt
- Great colour rendering
- Plastic coated aluminium housing with external driver
- IC-F/IC-4 rated covered and abutted
- CCT selectable 3000K, 4000K, 5700K
- Flicker free, triac dimmable
- Flex and plug

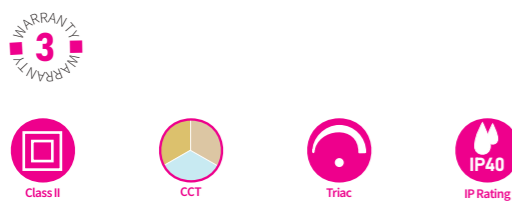
TECHNICAL SPECIFICATIONS

Product	Eco Gimbal
Ordering Code	PLP9WG
Power (W)	9
Colour Temperature (K)	3000 / 4000 / 5700
Lumen Output (lm)	850-950lm
CRI	>80
Beam Angle	60°
Dimming	Triac Dimming
LED Type	SMD
IP Rating	IP40 (front) / IP20 (back)
IK Rating	-
Input Voltage	220-240V AC
Electrical Class	Class II
Power Factor	0.85
Operating Temperature	-20°~40°C
Lifetime (hr)	50,000
Installation	Recessed
Dimensions (mm)	Ø105 x 35
Cutout (mm)	Ø85-95
Fitting Colour	White

CERTIFICATIONS



PRODUCT INFORMATION



FEATURES

- 25° tilt
- Great colour rendering
- Plastic coated aluminium housing with external driver
- IC-F/IC-4 rated covered and abutted
- CCT selectable 3000K, 4000K, 5700K
- Flicker free, triac dimmable
- Flex and plug

TECHNICAL SPECIFICATIONS

Product	Platinum Gimbal
Ordering Code	PLE13WG
Power (W)	13
Colour Temperature (K)	3000 / 4000 / 5700
Lumen Output (lm)	760-900
CRI	>80
Beam Angle	90°
Dimming	Triac Dimming
LED Type	SMD
IP Rating	IP20 (front) / IP20 (back)
IK Rating	-
Input Voltage	220-240V AC
Electrical Class	Class II
Power Factor	0.9
Operating Temperature	-20°~45°C
Lifetime (hr)	40,000
Installation	Recessed
Dimensions (mm)	Ø110 x 41.5
Cutout (mm)	Ø95-100
Fitting Colour	White

CERTIFICATIONS



PRODUCT INFORMATION



PURE DOWNLIGHT RANGE

Tricolour CCT Selectable Fire Rated LED Downlight



12W Downlight
Fire Rated
PLFR12WD

BLACK & WHITE
bezels included



FEATURES

- AS 1530.4 certified for New Zealand and Australia - 60 minutes
- Includes black and white face bezels
- IC-F/IC-4 rated covered and abutted
- CCT selectable 3000K, 4000K, 6000K
- Triac dimmable, external driver
- Flex and plug

CERTIFICATIONS



PRODUCT INFORMATION



TECHNICAL SPECIFICATIONS

Product	Fire Rated Downlight
Ordering Code	PLFR12WD
Power (W)	12
Colour Temperature (K)	3000 / 4000 / 6000
Lumen Output (lm)	100-1200
CRI	>80
Beam Angle	60°
Dimming	Triac Dimming
LED Type	SMD
IP Rating	IP65 (front) / IP40 (back)
IK Rating	-
Input Voltage	220-240V AC
Electrical Class	Class II
Power Factor	0.9
Operating Temperature	-20°~45°C
Lifetime (hr)	50,000
Installation	Recessed
Dimensions (mm)	Ø106 x 39
Cutout (mm)	Ø90
Fitting Colour	White / Black

PURE LUXE RANGE

CCT Selectable Surface Mounted LED Downlights



8W Downlight
Surface Mounted - White
PLUX8W



8W Downlight
Surface Mounted - Black
PLUX8B

FEATURES

- Surface mounted
- Direct (6W) / Indirect (2W)
- Aluminium housing with PC diffuser
- CCT selectable 3000K, 4000K, 5700K
- Triac dimmable

CERTIFICATIONS



PRODUCT INFORMATION



TECHNICAL SPECIFICATIONS

Product	Luxe Downlights	
Ordering Code	PLUX8W	PLUX8B
Power (W)	8	8
Colour Temperature (K)	3000 / 4000 / 5700	3000 / 4000 / 5700
Lumen Output (lm)	650-750	560-630
CRI	>80	>80
Beam Angle	100°	100°
Dimming	Triac Dimming	Triac Dimming
LED Type	SMD	SMD
IP Rating	IP20	IP20
IK Rating	-	-
Input Voltage	220-240V AC	220-240V AC
Electrical Class	Class I	Class I
Power Factor	0.9	0.9
Operating Temperature	-20°~40°C	-20°~40°C
Lifetime (hr)	50,000	50,000
Installation	Surface Mount	Surface Mount
Dimensions (mm)	Ø90 x 94	Ø90 x 94
Cutout (mm)	-	-
Fitting Colour	White	Black



OYSTER LIGHTS

Our oyster lights are the perfect solution for both commercial and residential applications. Designed to enhance the look and functionality of any space, these lights provide energy-efficient and cost-effective illumination. Choose from our wide range of styles and designs to find the ideal ceiling light that meets your needs and complements your decor.

22 PURE Eco Oyster Lights

24 PURE Oyster Lights

26 PURE Platinum Oyster Lights

29 PURE Luxe Oyster Lights



12W Eco Oyster Light
Ø255mm
PLECL12W



18W Eco Oyster Light
Ø330mm
PLECL18W



24W Eco Oyster Light
Ø380mm
PLECL24W

FEATURES

- Light weight and easy to install
- Metal housing with PMMA diffuser
- CCT selectable 3000K, 4000K, 5700K
- Flicker free, triac dimmable driver
- Surface mounted

CERTIFICATIONS



PRODUCT INFORMATION



TECHNICAL SPECIFICATIONS

Product	Eco Oysters		
	PLECL12W	PLECL18W	PLECL24W
Ordering Code	PLECL12W	PLECL18W	PLECL24W
Power (W)	12	18	24
Colour Temperature (K)	3000 / 4000 / 5700	3000 / 4000 / 5700	3000 / 4000 / 5700
Lumen Output (lm)	1120-1240	1630-1800	2180-2400
CRI	>80	>80	>80
Beam Angle	120°	120°	120°
Dimming	Triac Dimming	Triac Dimming	Triac Dimming
LED Type	SMD	SMD	SMD
IP Rating	IP44	IP44	IP44
IK Rating	IK05	IK05	IK05
Input Voltage	220-240V AC	220-240V AC	220-240V AC
Electrical Class	Class I	Class I	Class I
Power Factor	0.9	0.9	0.9
Operating Temperature	-10°~45°C	-10°~45°C	-10°~45°C
Lifetime (hr)	50,000	50,000	50,000
Installation	Surface Mount	Surface Mount	Surface Mount
Dimensions (mm)	Ø255 x 74	Ø330 x 74	Ø380 x 74
Fitting Colour	White	White	White



12W Oyster Light
Ø250mm
PLCL12W



18W Oyster Light
Ø300mm
PLCL18W



25W Oyster Light
Ø350mm
PLCL25W

FEATURES

- Light weight and easy to install
- PC body with PC opal diffuser
- CCT selectable 3000K, 4000K, 5700K
- Flicker free, triac dimmable driver
- Surface mounted

CERTIFICATIONS



PRODUCT INFORMATION



TECHNICAL SPECIFICATIONS

Product	Oyster Lights		
	PLCL12W	PLCL18W	PLCL25W
Ordering Code	PLCL12W	PLCL18W	PLCL25W
Power (W)	12	18	25
Colour Temperature (K)	3000 / 4000 / 5700	3000 / 4000 / 5700	3000 / 4000 / 5700
Lumen Output (lm)	1100-1300	1800-2100	2480-2900
CRI	>80	>80	>80
Beam Angle	120°	120°	120°
Dimming	Triac Dimming	Triac Dimming	Triac Dimming
LED Type	SMD	SMD	SMD
IP Rating	IP54	IP54	IP54
IK Rating	IK10	IK10	IK10
Input Voltage	220-240V AC	220-240V AC	220-240V AC
Electrical Class	Class II	Class II	Class II
Power Factor	0.9	0.9	0.9
Operating Temperature	-20°~45°C	-20°~45°C	-20°~45°C
Lifetime (hr)	50,000	50,000	50,000
Installation	Surface Mount	Surface Mount	Surface Mount
Dimensions (mm)	Ø250 x 48	Ø300 x 40	Ø350 x 40
Fitting Colour	White	White	White



18W Platinum Oyster Light
White / White Reflector
PLPCL18W



18W Platinum Oyster Light
Black / Black Reflector
PLPCL18B



18W Platinum Oyster Light
White / Gold Reflector
PLPCL18GW



18W Platinum Oyster Light
Black / Gold Reflector
PLPCL18GB

PURE PLATINUM OYSTER LIGHTS

Stylish and versatile, the PURE Platinum Oyster Lights come in black, white, black & gold, and white & gold. These 18W fixtures are CCT selectable (3000K, 4000K, 5700K), dimmable with a flicker-free triac driver, and feature a durable plastic-coated aluminum housing with a PC diffuser. Surface-mounted with an optional suspension kit, they deliver elegant, customisable lighting for any space.

FEATURES

- Aluminium housing with PC diffuser
- CCT selectable 3000K, 4000K, 5700K
- Flicker free, triac dimmable driver
- Surface mounted, suspension kit available

TECHNICAL SPECIFICATIONS

Product	Platinum Oysters			
	PLPCL18W	PLPCL18B	PLPCL18GW	PLPCL18GB
Ordering Code	PLPCL18W	PLPCL18B	PLPCL18GW	PLPCL18GB
Power (W)	18	18	18	18
Colour Temperature (K)	3000 / 4000 / 5700	3000 / 4000 / 5700	3000 / 4000 / 5700	3000 / 4000 / 5700
Lumen Output (lm)	1550-1750	1300-1550	1550-1750	1300-1550
CRI	>80	>80	>80	>80
Beam Angle	120°	120°	120°	120°
Dimming	Triac Dimming	Triac Dimming	Triac Dimming	Triac Dimming
LED Type	SMD	SMD	SMD	SMD
IP Rating	IP44	IP44	IP44	IP44
IK Rating	-	-	-	-
Input Voltage	220-240V AC	220-240V AC	220-240V AC	220-240V AC
Electrical Class	Class II	Class II	Class II	Class II
Power Factor	0.9	0.9	0.9	0.9
Operating Temperature	-20°~45°C	-20°~45°C	-20°~45°C	-20°~45°C
Lifetime (hr)	50,000	50,000	50,000	50,000
Installation	Surface / Suspended	Surface / Suspended	Surface / Suspended	Surface / Suspended
Dimensions (mm)	Ø301 x 58	Ø301 x 58	Ø301 x 58	Ø301 x 58
Fitting Colour	White	Black	White / Gold	Black / Gold

ACCESSORIES



Suspension Kit
1500mm - White
PLPCLSUSW



Suspension Kit
1500mm - Black
PLPCLSUSB

CERTIFICATIONS



PRODUCT INFORMATION





PURE LUXE RANGE

CCT Selectable Surface Mounted LED Oyster Lights



15W Luxe Oyster Light
White / White Reflector
PLCLUX15W



15W Luxe Oyster Light
White / Gold Reflector
PLCLUX15GW

FEATURES

- Decorative light around main light creating a luxurious ambience
- PC housing with PC diffuser
- Flicker free, triac dimmable driver
- Surface mounted, suspension kit available

ACCESSORIES



Suspension Kit
1500mm - White
PLCLUXSUSW

CERTIFICATIONS



PRODUCT INFORMATION



TECHNICAL SPECIFICATIONS

Product	Luxe Oyster Lights	
Ordering Code	PLCLUX15W	PLCLUX15GW
Power (W)	15	15
Colour Temperature (K)	3000 / 4000 / 5700	3000 / 4000 / 5700
Lumen Output (lm)	1550-1700	1550-1700
CRI	>80	>80
Beam Angle	110°	110°
Dimming	Triac Dimming	Triac Dimming
LED Type	SMD	SMD
IP Rating	IP44	IP44
IK Rating	IK06	IK06
Input Voltage	220-240V AC	220-240V AC
Electrical Class	Class II	Class II
Power Factor	0.9	0.9
Operating Temperature	-20°~45°C	-20°~45°C
Lifetime (hr)	50,000	50,000
Installation	Surface / Suspended	Surface / Suspended
Dimensions (mm)	Ø300 x 71	Ø300 x 71
Fitting Colour	White	White / Gold



TRACK LIGHTS

LED track lighting is an excellent choice for enhancing any room or workspace. We offer a range of spots and pendants for the track, providing directional light that allows you to adjust the brightness and location of each light. This versatile and cost-effective solution improves both the functionality and aesthetic appeal of your space.

PURE 48V Track

32 PURE Linear Track Lights

34 PURE Spot Lights

36 PURE Track Pendants

38 PURE Track and Accessories

PURE 3-Circuit Track

40 PURE Track Spot Lights

42 PURE Track and Accessories

PURE 48V TRACK RANGE

Linear Spot LED Track Lights



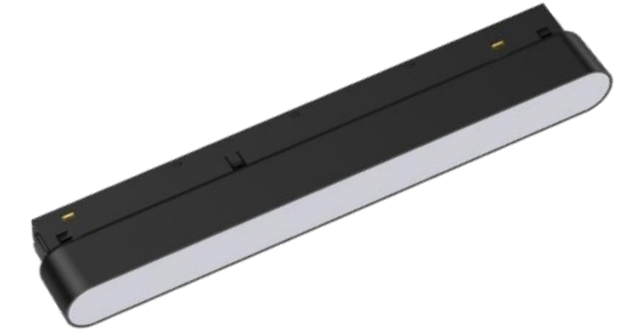
8W Linear Track Light
48V - Black
PLTLS8B



16W Linear Track Light
48V - Black
PLTLS16B



8W Linear Track Light
48V - Black
PLTLL8B



16W Linear Track Light
48V - Black
PLTLL16B

PURE 48V TRACK RANGE

Linear Diffused LED Track Lights

PURE 48V LINEAR TRACK LIGHTS

The PURE Track Light Range brings a contemporary, modern, and sophisticated look to any space with ease. Offering exceptional versatility, these track lights are highly customisable and flexible once installed, making them perfect for a wide range of applications. Designed to blend both industrial and elegant aesthetics, they align with the latest trends in lighting design that many love.

Track lighting is ideal for highlighting important features in a home, such as artwork, photos, or unique architectural details. The adjustable fixtures can also be positioned to illuminate dark corners where ambient or natural light falls short, enhancing the functionality and ambiance of any room.

With countless ways to configure and utilise them, PURE Track Lights provide a creative and dynamic way to transform your space. Whether you're designing a cozy living area, a stylish gallery, or a sleek commercial setting, these lights offer the flexibility to bring your vision to life.

FEATURES

- Modular elegant and simple
- DC48V linear design
- Wattage selectable: 8W - selectable between 4.5, 6 and 8W. 16W - selectable between 9, 12 and 16W.
- Good colour rendering
- Suggested driver - [PLTL200WD](#)

CERTIFICATIONS



PRODUCT INFORMATION



TECHNICAL SPECIFICATIONS

Product	48V Linear Track Lights			
	PLTLS8B	PLTLS16B	PLTLL8B	PLTLL16B
Ordering Code	PLTLS8B	PLTLS16B	PLTLL8B	PLTLL16B
Power (W)	8	16	8	16
Colour Temperature (K)	3000	3000	3000	3000
Lumen Output (lm)	540-560	1080-1200	510-550	1070-1120
CRI	>90	>90	>90	>90
Beam Angle	45°	45°	100°	100°
Dimming	Non Dimming	Non Dimming	Non Dimming	Non Dimming
LED Type	SMD	SMD	SMD	SMD
IP Rating	IP20	IP20	IP20	IP20
IK Rating	-	-	-	-
Input Voltage	DC 48V	DC 48V	DC 48V	DC 48V
Electrical Class	Class III	Class III	Class III	Class III
Power Factor	0.9	0.9	0.9	0.9
Operating Temperature	-20°~40°C	-20°~40°C	-20°~40°C	-20°~40°C
Lifetime (hr)	50,000	50,000	50,000	50,000
Installation	Track	Track	Track	Track
Dimensions (mm)	122 x 23 x 43	233 x 23 x 43	122 x 23 x 43	233 x 23 x 43
Fitting Colour	Black	Black	Black	Black

PURE 48V TRACK RANGE

Spot LED Track Lights



7W Spot Track Light
48V - Black
PLTL7W



9W Spot Track Light
48V - Black
PLTL9W

FEATURES

- 360° rotation and 90° tilt
- Wattage selectable: 7W - selectable between 4.5, 6 & 7W. 9W - selectable between 5.5, 7 & 9W.
- Good colour rendering
- Suggested driver - [PLTL200WD](#)

CERTIFICATIONS



PRODUCT INFORMATION



TECHNICAL SPECIFICATIONS

Product	48V Spot Track Light	
Ordering Code	PLTL7W	PLTL9W
Power (W)	7	9
Colour Temperature (K)	3000	3000
Lumen Output (lm)	620-690	760-820
CRI	>90	>90
Beam Angle	60°	50°
Dimming	Non Dimming	Non Dimming
LED Type	COB	COB
IP Rating	IP20	IP20
IK Rating	-	-
Input Voltage	DC 48V	DC 48V
Electrical Class	Class III	Class III
Power Factor	0.9	0.9
Operating Temperature	-20°~40°C	-20°~40°C
Lifetime (hr)	50,000	50,000
Installation	Track	Track
Dimensions (mm)	40 x 120 x 146	50 x 120 x 166
Fitting Colour	Black	Black



PURE 48V TRACK RANGE

Pendant LED Track Lights



11W Pendant Track Light
PLTLP11B



7W Pendant Track Light
with Wire Frame Diffuser
PLTLPC7BC



7W Pendant Track Light
with Frosted Diffuser
PLTLP7B

FEATURES

- Modular elegant and simple
- DC48V pendants
- 1m length from track
- Wattage selectable: 7W - selectable between 4.5, 6 & 7W. 11W - selectable between 6.5, 9 & 11W.
- Good colour rendering
- Suggested driver - **PLTL200WD**

CERTIFICATIONS



PRODUCT INFORMATION



TECHNICAL SPECIFICATIONS

Product	Pendant Track Lights		
Ordering Code	PLTLP11B	PLTLPC7BC	PLTLP7B
Power (W)	11	7	7
Colour Temperature (K)	3000	3000	3000
Lumen Output (lm)	870-920	280-310	280-310
CRI	>90	>90	>90
Beam Angle	50°	70°	300°
Dimming	Non Dimming	Non Dimming	Non Dimming
LED Type	COB	SMD	SMD
IP Rating	IP20	IP20	IP20
IK Rating	-	-	-
Input Voltage	DC 48V	DC 48V	DC 48V
Electrical Class	Class III	Class III	Class III
Power Factor	0.9	0.9	0.9
Operating Temperature	-20°~40°C	-20°~40°C	-20°~40°C
Lifetime (hr)	50,000	50,000	50,000
Installation	Track	Track	Track
Dimensions (mm)	Ø50 x 160	Ø82 x 176	Ø80 x 172
Fitting Colour	Black	Black / Copper	Black / White

PURE 48V TRACK RANGE

Track Accessories



1m Length 48V Track
Surface Mounted - Black
PLTL1MB

2m Length 48V Track
Surface Mounted - Black
PLTL2MB



48V 200W Constant Voltage Driver
220-240V AC input - 48V DC output
Black
PLTL200WD

48V TRACK ACCESSORIES

Track Components

Product Code	Description
PLECB	End caps 26 x 22mm black
PLTLCB	Cover for open surface mounted track 1000 x 22 x 8mm black
PLTLJ	Reinforcement / straight joiner for surface mounted track 100 x 13 x 3mm

Track Joiners

Product Code	Description
PLSJB	Striaight connector for surface mounted track 144 x 16 x 17mm black
PLTL90	90° / L-shaped joiner for surface mounted track 144 x 144mm black
PLTLJL	L - Track connector left for surface mounted track 95 x 95 x 22mm black
PLTLJR	L - Track connector right for surface mounted track 95 x 95 x 22mm black

Mounting Accessories

Product Code	Description
PLTLSMB	Surface mount bracket 30 x 28 x 13mm Black
PLTLEZB	Easy click suspension wire kit for surface mount track 1.5m
PLTLCMB	Reinforcement suspension wire kite for surface mount track 1.5m





15W Spot Track Light
3-Circuit - Black
PLTLB15



15W Spot Track Light
3-Circuit - White
PLTLW15



25W Spot Track Light
3-Circuit - Black
PLTLB25



25W Spot Track Light
3-Circuit - White
PLTLW25

OPTIONAL LENSES



24° Lens
PLTLL24
36° Lens
PLTLL36

FEATURES

- Low glare design, 60° lens standard. 24° and 36° lens options available
- Aluminium body with PMMA diffuser
- CCT selectable; 3000K, 4000K, 5000K
- Good colour rendering - CRI>90
- 3-circuit track system

CERTIFICATIONS



PRODUCT INFORMATION



TECHNICAL SPECIFICATIONS

Product	3-Circuit Spot Track Lights			
Ordering Code	PLTLB15	PLTLW15	PLTLB25	PLTLW25
Power (W)	15	15	25	25
Colour Temperature (K)	3000 / 4000 / 5000	3000 / 4000 / 5000	3000 / 4000 / 5000	3000 / 4000 / 5000
Lumen Output (lm)	1200-1500	1200-1500	1950-2450	1950-2450
CRI	>90	>90	>90	>90
Beam Angle	60°	60°	60°	60°
Dimming	Triac Dimming	Triac Dimming	Triac Dimming	Triac Dimming
LED Type	COB	COB	COB	COB
IP Rating	IP20	IP20	IP20	IP20
IK Rating	IK06	IK06	IK06	IK06
Input Voltage	220-240V AC	220-240V AC	220-240V AC	220-240V AC
Electrical Class	Class I	Class I	Class I	Class I
Power Factor	0.9	0.9	0.9	0.9
Operating Temperature	-20°~40°C	-20°~40°C	-20°~40°C	-20°~40°C
Lifetime (hr)	50,000	50,000	50,000	50,000
Installation	Track	Track	Track	Track
Dimensions (mm)	Ø85 x 269	Ø85 x 269	Ø85 x 269	Ø85 x 269
Fitting Colour	Black	White	Black	White



3-Circuit Track
1M-Black
PL-0410B



3-Circuit Track
1M-White
PL-0410W

3-Circuit Track
2M-Black
PL-0420B

3-Circuit Track
2M-White
PL-0420W

3-Circuit Track
3M-Black
PL-0430B

3-Circuit Track
3M-White
PL-0430W



Single Spot
Surface Mount Plate
Black
PLTLBB



Single Spot
Surface Mount Plate
White
PLTLBW

3-CIRCUIT TRACK ACCESSORIES - BLACK

Track Components & Power

Product Code	Description
PL-M14B	Track reinforcement for surface mount track black
PL-0432B	End cap for surface mount track black
PL-0431RB	End power feed - live end right black
PL-0431LB	End power feed - live end left black
PL-0434B	Centre Power feed - live joiner black

Track Joiners

Product Code	Description
PL-0433B	Straight joiner black
PL-0433AB	Isolation joiner black
PL-M436RB	T-joiner right black
PL-M436LB	T-joiner left black
PL-0437B	Cross joiner black
PL-M438B	L-joiner (90°) black

Mounting Accessories

Product Code	Description
PL-04SKB	Surface mount bracket black
PL-M146TB	T-bar mounting bracket black
PL-EZ0447B	Suspension rod kit - 1m black
PL-EZ0448B	Suspension cable kit - 1.5m black



END CAP



LIVE END



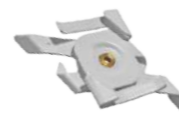
STRAIGHT JOINER



ISOLATION JOINER



SURFACE BRACKET



T-BAR BRACKET

3-CIRCUIT TRACK ACCESSORIES - WHITE

Track Components & Power

Product Code	Description
PL-M14W	Track reinforcement for surface mount track white
PL-0432W	End cap for surface mount track white
PL-0431RW	End power feed - live end right white
PL-0431LW	End power feed - live end left white
PL-0434W	Centre Power feed - live joiner white

Track Joiners

Product Code	Description
PL-0433BW	Straight joiner white
PL-0433AW	Isolation joiner white
PL-M436RW	T-joiner right white
PL-M436LW	T-joiner left white
PL-0437W	Cross joiner white
PL-M438W	L-joiner (90°) white

Mounting Accessories

Product Code	Description
PL-04SKW	Surface mount bracket white
PL-M146TW	T-bar mounting bracket white
PL-EZ0447W	Suspension rod kit - 1m white
PL-EZ0448W	Suspension cable kit - 1.5m white



CENTRE FEED



T-JOINER



CROSS JOINER



L-JOINER



ROD SUSPENSION



CABLE SUSPENSION



INDOOR SPOT LIGHTS

Our indoor spot lights provide total flexibility to illuminate specific features in your home. Available in single, double, and triple configurations, and in both black and white, these spot lights are perfect for use in your kitchen, living room, or bedroom.

46 PURE Indoor Spot Lights

PURE INDOOR SPOT LIGHT RANGE

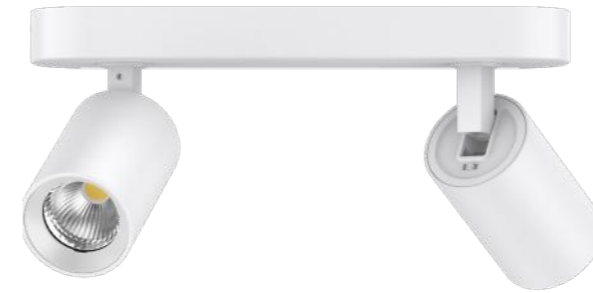
Single CCT Selectable LED Spot Lights



6W Single Spot Light
Surface Mounted - White
PLSLI6W



6W Single Spot Light
Surface Mounted - Black
PLSLI6B



2 x 6W Twin Spot Light
Surface Mounted - White
PLSLI2X6W



2 x 6W Twin Spot Light
Surface Mounted - Black
PLSLI2X6B

FEATURES

- Surface mounted
- Slim low glare design
- 350° swivel with a 70° tilt
- Aluminium housing with tempered glass diffuser
- CCT selectable 3000K, 4000K, 5000K
- Flicker-free triac dimmable driver

CERTIFICATIONS



PRODUCT INFORMATION



TECHNICAL SPECIFICATIONS

Product	Single Spot Light	
Ordering Code	PLSLI6W	PLSLI6B
Power (W)	6	6
Colour Temperature (K)	3000 / 4000 / 5000	3000 / 4000 / 5000
Lumen Output (lm)	400-460	400-460
CRI	>90	>90
Beam Angle	60°	60°
Dimming	Triac Dimming	Triac Dimming
LED Type	COB	COB
IP Rating	IP20	IP20
IK Rating	-	-
Input Voltage	220-240V AC	220-240V AC
Electrical Class	Class I	Class I
Power Factor	0.85	0.85
Operating Temperature	-20°~40°C	-20°~40°C
Lifetime (hr)	50,000	50,000
Installation	Surface Mount	Surface Mount
Dimensions (mm)	Ø85 x 139	Ø85 x 139
Fitting Colour	White	Black

FEATURES

- Surface mounted
- Slim low glare design
- 350° swivel with a 70° tilt
- Aluminium housing with tempered glass diffuser
- CCT selectable 3000K, 4000K, 5000K
- Flicker-free triac dimmable driver

CERTIFICATIONS



PRODUCT INFORMATION



TECHNICAL SPECIFICATIONS

Product	Twin Spot Light	
Ordering Code	PLSLI2X6W	PLSLI2X6B
Power (W)	12	12
Colour Temperature (K)	3000 / 4000 / 5000	3000 / 4000 / 5000
Lumen Output (lm)	800-960	800-960
CRI	>90	>90
Beam Angle	60°	60°
Dimming	Triac Dimming	Triac Dimming
LED Type	COB	COB
IP Rating	IP20	IP20
IK Rating	-	-
Input Voltage	220-240V AC	220-240V AC
Electrical Class	Class I	Class I
Power Factor	0.85	0.85
Operating Temperature	-20°~40°C	-20°~40°C
Lifetime (hr)	50,000	50,000
Installation	Surface Mount	Surface Mount
Dimensions (mm)	260 x 56 x 139	260 x 56 x 139
Fitting Colour	White	Black

PURE INDOOR SPOT LIGHT RANGE

Triple CCT Selectable LED Spot Lights



3 x 6W Triple Spot Light
Surface Mounted - White
PLSLI3X6W



3 x 6W Triple Spot Light
Surface Mounted - Black
PLSLI3X6B

FEATURES

- Surface mounted
- Slim low glare design
- 350° swivel with a 70° tilt
- Aluminium housing with tempered glass diffuser
- CCT selectable 3000K, 4000K, 5000K
- Flicker-free triac dimmable driver

CERTIFICATIONS



PRODUCT INFORMATION



TECHNICAL SPECIFICATIONS

Product	Triple Spot Light	
Ordering Code	PLSLI3X6W	PLSLI3X6B
Power (W)	18	18
Colour Temperature (K)	3000 / 4000 / 5000	3000 / 4000 / 5000
Lumen Output (lm)	1200-1450	1200-1450
CRI	>90	>90
Beam Angle	60°	60°
Dimming	Triac Dimming	Triac Dimming
LED Type	COB	COB
IP Rating	IP20	IP20
IK Rating	-	-
Input Voltage	220-240V AC	220-240V AC
Electrical Class	Class I	Class I
Power Factor	0.85	0.85
Operating Temperature	-20°~40°C	-20°~40°C
Lifetime (hr)	50,000	50,000
Installation	Surface Mount	Surface Mount
Dimensions (mm)	430 x 56 x 139	430 x 56 x 139
Fitting Colour	White	Black





PENDANT LIGHTS

A pendant light can transform the look of any room. Perfect for adding design, personality, and character, pendant lights can be used in any room in your home - from the living room to the bedroom. Illuminate your space with style and make a statement with our versatile range of pendant lights.

53 PURE Pendant Lights

54 PURE Luxe Pendant Lights



PURE PENDANT LIGHT RANGE

CCT Selectable LED Pendant Lights



10W Pendant Light
White
PLPW10



10W Pendant Light
Black
PLPB10

FEATURES

- Low glare design 60° lens standard, optional 24° & 36° available
- Aluminium body with PMMA diffuser
- CCT selectable 3000K, 4000K, 5000K
- CRI>90



PLTLL24P - 24° lens
PLTLL36P - 36° lens

CERTIFICATIONS



PRODUCT INFORMATION



TECHNICAL SPECIFICATIONS

Product	Pendant Light	
	PLPW10	PLPB10
Ordering Code	PLPW10	PLPB10
Power (W)	10	10
Colour Temperature (K)	3000 / 4000 / 5000	3000 / 4000 / 5000
Lumen Output (lm)	750-950	750-950
CRI	>90	>90
Beam Angle	60°	60°
Dimming	Triac Dimming	Triac Dimming
LED Type	COB	COB
IP Rating	IP20	IP20
IK Rating	-	-
Input Voltage	220-240V AC	220-240V AC
Electrical Class	Class I	Class I
Power Factor	0.9	0.9
Operating Temperature	-20°~40°C	-20°~40°C
Lifetime (hr)	50,000	50,000
Installation	Suspension	Suspension
Dimensions (mm)	Ø104 x 1265	Ø104 x 1265
Fitting Colour	White	Black



10W Pendant Light
White
PLPLUX10W



10W Pendant Light
Black
PLPLUX10B



10W Pendant Light
White / Gold
PLPLUX10GW



10W Pendant Light
Black / Gold
PLPLUX10GB

PURE LUXE PENDANT LIGHTS

PURE Luxe Pendant Lights combine elegance and functionality, making them a stylish choice for various applications. Available in black, white, black & gold, and white & gold, these 10W, 3000K fixtures deliver soft, uniform light output that creates a warm and inviting atmosphere.

Featuring a surface mount canopy with a 1500mm cable, their sleek design complements any modern or contemporary space. The internal flicker-free triac dimmable driver ensures smooth dimming for enhanced ambiance and versatility. PURE Luxe Pendant Lights are the perfect blend of style and performance for both residential and commercial settings.

FEATURES

- Surface mount with canopy and 1500mm cable
- Elegant shape suitable for a number of applications
- Internal flicker-free triac dimmable driver
- Soft uniform light output

CERTIFICATIONS



PRODUCT INFORMATION



TECHNICAL SPECIFICATIONS

Product	Luxe Pendant Light			
	PLPLUX10W	PLPLUX10B	PLPLUX10GW	PLPLUX10GB
Ordering Code	PLPLUX10W	PLPLUX10B	PLPLUX10GW	PLPLUX10GB
Power (W)	10	10	10	10
Colour Temperature (K)	3000	3000	3000	3000
Lumen Output (lm)	850-1100	600-900	600-900	600-900
CRI	>80	>80	>80	>80
Beam Angle	100°	100°	100°	100°
Dimming	Triac Dimming	Triac Dimming	Triac Dimming	Triac Dimming
LED Type	SMD	SMD	SMD	SMD
IP Rating	IP20	IP20	IP20	IP20
IK Rating	-	-	-	-
Input Voltage	220-240V AC	220-240V AC	220-240V AC	220-240V AC
Electrical Class	Class I	Class I	Class I	Class I
Power Factor	0.9	0.9	0.9	0.9
Operating Temperature	-20°~40°C	-20°~40°C	-20°~40°C	-20°~40°C
Lifetime (hr)	50,000	50,000	50,000	50,000
Installation	Suspension	Suspension	Suspension	Suspension
Dimensions (mm)	Ø300 x 258	Ø300 x 258	Ø300 x 258	Ø300 x 258
Fitting Colour	White	Black	White / Gold	Black / Gold



INDOOR WALL LIGHTS & MIRROR LIGHTS

Indoor wall lights and mirror lights are the ultimate blend of style and functionality, perfect for elevating your interior spaces. Whether you're looking to create ambiance, highlight key design features, or add a practical touch, these lights deliver both beauty and purpose. Illuminate your home with elegance and precision using our versatile range

58 PURE Reading Lights

60 PURE Rotatable Wall Lights

61 PURE Oval Wall Lights

62 PURE Wave Wall Lights

64 PURE Square / Curved Wall Lights

66 PURE Mirror Lights



3W Reading Light
White
PLRLW3



3W Reading Light
Black
PLRLB3



3W Reading Light
White
PLRL3RW



3W Reading Light
Black
PLRL3RB

PURE READING LIGHTS

PURE Reading Lights are the perfect bedside companion, offering sleek round or rectangular designs in black or white. With a 3W output, they provide just the right amount of focused light for reading or relaxing, blending style and functionality seamlessly.



FEATURES

- Compact artistic design
- Aluminium body with PMMA diffuser
- Adjustable for comfortable reading
- 240V hardwire

CERTIFICATIONS



PRODUCT INFORMATION



TECHNICAL SPECIFICATIONS

Product	Reading Light			
Ordering Code	PLRLW3	PLRLB3	PLRL3RW	PLRL3RB
Power (W)	3	3	3	3
Colour Temperature (K)	3000	3000	3000	3000
Lumen Output (lm)	200	200	200	200
CRI	>80	>80	>80	>80
Beam Angle	50°	50°	50°	50°
Dimming	Non dimming	Non dimming	Non dimming	Non dimming
LED Type	SMD	SMD	SMD	SMD
IP Rating	IP20	IP20	IP20	IP20
IK Rating	IK06	IK06	IK06	IK06
Input Voltage	220-240V AC	220-240V AC	220-240V AC	220-240V AC
Electrical Class	Class I	Class I	Class I	Class I
Power Factor	0.9	0.9	0.9	0.9
Operating Temperature	-20°~45°C	-20°~45°C	-20°~45°C	-20°~45°C
Lifetime (hr)	50,000	50,000	50,000	50,000
Installation	Wall Mount	Wall Mount	Wall Mount	Suspension
Dimensions (mm)	115 x 63 x 71	115 x 63 x 71	Ø95 x 71	Ø95 x 71
Fitting Colour	White	Black	White	Black

PURE INDOOR WALL LIGHT RANGE

Rotatable LED Wall Lights



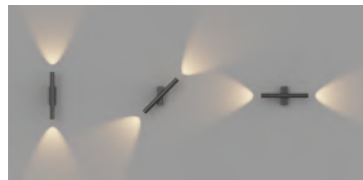
4W Rotatable Light
White
PLWLT14W



4W Rotatable Light
Black
PLWLT14B

FEATURES

- 350° rotation
- Aluminium body with PC diffuser
- Decorative and versatile
- Flicker-free internal driver



CERTIFICATIONS



PRODUCT INFORMATION

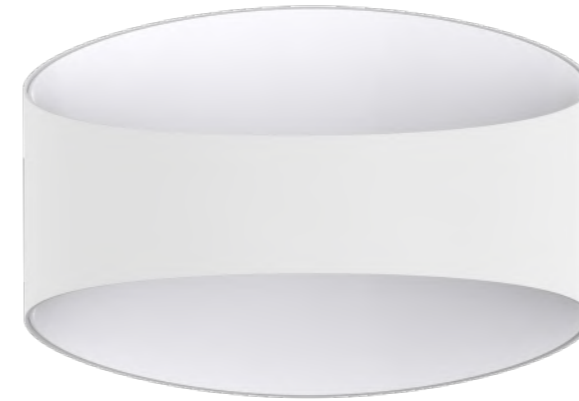


TECHNICAL SPECIFICATIONS

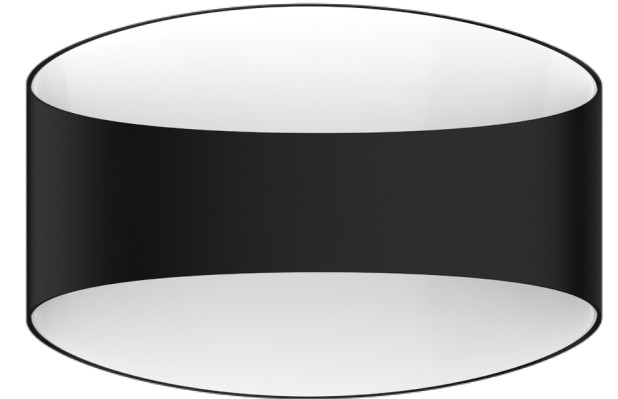
Product	Rotatable Wall Light	
Ordering Code	PLWLT14W	PLWLT14B
Power (W)	4	4
Colour Temperature (K)	3000	3000
Lumen Output (lm)	440	440
CRI	>80	>80
Beam Angle	20°	20°
Dimming	Non Dimming	Non Dimming
LED Type	SMD	SMD
IP Rating	IP20	IP20
IK Rating	IK06	IK06
Input Voltage	220-240V AC	220-240V AC
Electrical Class	Class I	Class I
Power Factor	0.4	0.4
Operating Temperature	-20°~45°C	-20°~45°C
Lifetime (hr)	50,000	50,000
Installation	Wall Mount	Wall Mount
Dimensions (mm)	320 x 61 x 46	320 x 61 x 46
Fitting Colour	White	Black

PURE INDOOR WALL LIGHT RANGE

Oval CCT Selectable LED Wall Lights



8W Oval Wall Light
White
PLWLUXW8



8W Oval Wall Light
Black
PLWLUXB8

FEATURES

- Hollow decorative design
- Aluminium body with PC diffuser
- CCT Selectable 3000K, 4000K
- Flicker-free internal driver

CERTIFICATIONS



PRODUCT INFORMATION



TECHNICAL SPECIFICATIONS

Product	Oval Wall Light	
Ordering Code	PLWLUXW8	PLWLUXB8
Power (W)	8	8
Colour Temperature (K)	3000 / 4000	3000 / 4000
Lumen Output (lm)	380-435	380-435
CRI	>80	>80
Beam Angle	360°	360°
Dimming	Triac Dimming	Triac Dimming
LED Type	SMD	SMD
IP Rating	IP40	IP40
IK Rating	IK06	IK06
Input Voltage	220-240V AC	220-240V AC
Electrical Class	Class I	Class I
Power Factor	0.9	0.9
Operating Temperature	-20°~45°C	-20°~45°C
Lifetime (hr)	50,000	50,000
Installation	Wall Mount	Wall Mount
Dimensions (mm)	200 x 140 x 107	200 x 140 x 107
Fitting Colour	White	Black

PURE INDOOR WALL LIGHT RANGE

Wave CCT Selectable LED Wall Lights



8W Wave Wall Light
Direct / Indirect White
PLUDRW8



8W Wave Wall Light
Direct / Indirect Black
PLUDRB8

FEATURES

- Simple and compact
- Aluminium body with PC diffuser
- Up/Down wall light (5.5 indirect / 2.5 direct)
- Flicker-free internal driver

TECHNICAL SPECIFICATIONS

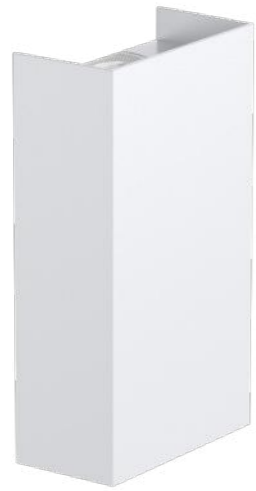
Product	Wave Wall Light	
Ordering Code	PLUDRW8	PLUDRB8
Power (W)	8	8
Colour Temperature (K)	3000 / 4000 / 5700	3000 / 4000 / 5700
Lumen Output (lm)	630-700	630-700
CRI	>80	>80
Beam Angle	110°	110°
Dimming	Triac Dimming	Triac Dimming
LED Type	SMD	SMD
IP Rating	IP20	IP20
IK Rating	-	-
Input Voltage	220-240V AC	220-240V AC
Electrical Class	Class I	Class I
Power Factor	0.88	0.88
Operating Temperature	-20°~45°C	-20°~45°C
Lifetime (hr)	50,000	50,000
Installation	Wall Mount	Wall Mount
Dimensions (mm)	140 x 70 x 120	140 x 70 x 120
Fitting Colour	White	Black

CERTIFICATIONS



PRODUCT INFORMATION





8W Square Wall Light
Direct / Indirect White
PLUDSW8



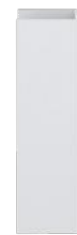
8W Square Wall Light
Direct / Indirect Black
PLUDSB8



8W Curved Wall Light
Direct / Indirect White
PLUDRW8



8W Curved Wall Light
Direct / Indirect Black
PLUDRB8



FEATURES

- Direct / indirect lighting with uniform light output
- Aluminium body with PMMA diffuser
- CCT selectable; 3000K, 4000K, 5700K
- Triac dimmable flicker-free driver

CERTIFICATIONS



PRODUCT INFORMATION



TECHNICAL SPECIFICATIONS

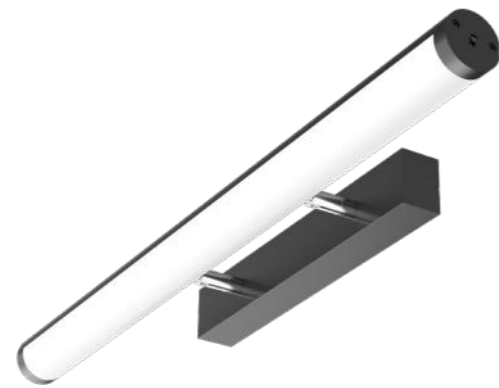
Product	Up / Down Wall Lights			
	PLUDSW8	PLUDSB8	PLUDCW8	PLUDCB8
Ordering Code	PLUDSW8	PLUDSB8	PLUDCW8	PLUDCB8
Power (W)	8	8	8	8
Colour Temperature (K)	3000 / 4000 / 5700	3000 / 4000 / 5700	3000 / 4000 / 5700	3000 / 4000 / 5700
Lumen Output (lm)	670-880	670-880	670-880	670-880
CRI	>80	>80	>80	>80
Beam Angle	100° Up & Down	100° Up & Down	100° Up & Down	100° Up & Down
Dimming	Triac Dimming	Triac Dimming	Triac Dimming	Triac Dimming
LED Type	SMD	SMD	SMD	SMD
IP Rating	IP20	IP20	IP20	IP20
IK Rating	-	-	-	-
Input Voltage	220-240V AC	220-240V AC	220-240V AC	220-240V AC
Electrical Class	Class I	Class I	Class I	Class I
Power Factor	0.88	0.88	0.88	0.88
Operating Temperature	-20°~40°C	-20°~40°C	-20°~40°C	-20°~40°C
Lifetime (hr)	50,000	50,000	50,000	50,000
Installation	Wall Mount	Wall Mount	Wall Mount	Wall Mount
Dimensions (mm)	150 x 85 x 43	150 x 85 x 43	150 x 85 x 43	150 x 85 x 43
Fitting Colour	White	Black	White	Black

PURE MIRROR LIGHT RANGE

CCT Selectable LED Mirror Lights



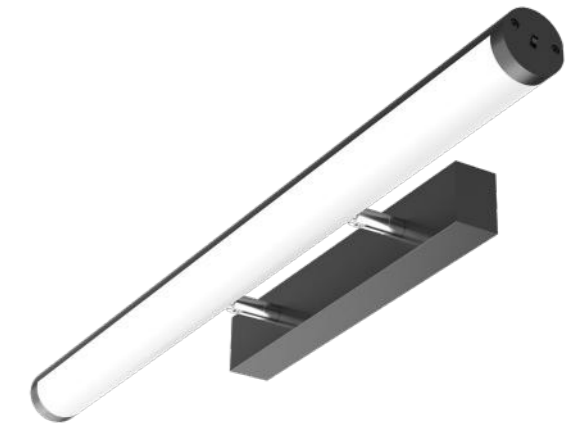
10W Mirror Light
580mm - White
PLMLW10



10W Mirror Light
580mm - black
PLMLB10



20W Mirror Light
1140mm - White
PLMLW20



20W Mirror Light
1140mm - Black
PLMLB20



FEATURES

- Tiltable to help eliminate shadows
- Aluminium body with PMMA diffuser
- CCT selectable; 3000K, 4000K, 5000K
- Flicker-free driver

CERTIFICATIONS



PRODUCT INFORMATION



TECHNICAL SPECIFICATIONS

Product	Mirror Lights			
Ordering Code	PLMLW10	PLMLB10	PLMLW20	PLMLB20
Power (W)	10	10	20	20
Colour Temperature (K)	3000 / 4000 / 5000	3000 / 4000 / 5000	3000 / 4000 / 5000	3000 / 4000 / 5000
Lumen Output (lm)	1020-1150	1020-1150	2100-2430	2100-2430
CRI	>80	>80	>80	>80
Beam Angle	120°	120°	120°	120°
Dimming	Non Dimming	Non Dimming	Non Dimming	Non Dimming
LED Type	SMD	SMD	SMD	SMD
IP Rating	IP40	IP40	IP40	IP40
IK Rating	IK08	IK08	IK08	IK08
Input Voltage	220-240V AC	220-240V AC	220-240V AC	220-240V AC
Electrical Class	Class I	Class I	Class I	Class I
Power Factor	0.9	0.9	0.9	0.9
Operating Temperature	-20°~45°C	-20°~45°C	-20°~45°C	-20°~45°C
Lifetime (hr)	50,000	50,000	50,000	50,000
Installation	Wall Mount	Wall Mount	Wall Mount	Wall Mount
Dimensions (mm)	580 x 41 x 111	580 x 41 x 111	1140 x 41 x 111	1140 x 41 x 111
Fitting Colour	White	Black	White	Black

PURE MIRROR LIGHT RANGE

Up / Down CCT Selectable LED Mirror Lights



10W Mirror Light
600mm - White
PLML6010W



10W Mirror Light
600mm - Black
PLML6010B



15W Mirror Light
900mm - White
PLML9015W



15W Mirror Light
900mm - Black
PLML9015B



FEATURES

- Direct / indirect lighting to help eliminate shadows
- Aluminium body with gel and PC diffusers
- CCT selectable; 3000K, 4000K, 5700K
- Flicker-free driver

CERTIFICATIONS



PRODUCT INFORMATION



TECHNICAL SPECIFICATIONS

Product	Mirror Lights			
Ordering Code	PLML6010W	PLML6010B	PLML9015W	PLML9015B
Power (W)	10	10	15	15
Colour Temperature (K)	3000 / 4000 / 5700	3000 / 4000 / 5700	3000 / 4000 / 5700	3000 / 4000 / 5700
Lumen Output (lm)	870-950	680-760	1350-1450	1050-1150
CRI	>80	>80	>80	>80
Beam Angle	110° up / 110° x 5° down	110° up / 110° x 5° down	110° up / 110° x 5° down	110° up / 110° x 5° down
Dimming	Non Dimming	Non Dimming	Non Dimming	Non Dimming
LED Type	SMD	SMD	SMD	SMD
IP Rating	IP54	IP54	IP54	IP54
IK Rating	IK03	IK03	IK03	IK03
Input Voltage	220-240V AC	220-240V AC	220-240V AC	220-240V AC
Electrical Class	Class I	Class I	Class I	Class I
Power Factor	0.9	0.9	0.9	0.9
Operating Temperature	-20°~45°C	-20°~45°C	-20°~45°C	-20°~45°C
Lifetime (hr)	50,000	50,000	50,000	50,000
Installation	Wall Mount	Wall Mount	Wall Mount	Wall Mount
Dimensions (mm)	600 x 86 x 30	600 x 86 x 30	900 x 86 x 30	900 x 86 x 30
Fitting Colour	White	Black	White	Black



INDOOR STEP LIGHTS

Ideal for hallways, entranceways, and stairs, LED step lights are a subtle option for brightening up small spaces. We offer a range of styles in both black and white, ensuring you find the perfect match for your decor. Enhance safety and add a touch of elegance to your home with our versatile step lights.

72 PURE Indoor Step Lights

PURE INDOOR STEP LIGHT RANGE

Interchangeable LED Step Lights



3W Step Light
White
PLSH3W



3W Step Light
Black
PLSH3B

FEATURES

- External driver included
- One fitting with multiple magnetic face plate options
- Decorative and versatile
- Aluminium body with PC diffuser

CERTIFICATIONS



PRODUCT INFORMATION



TECHNICAL SPECIFICATIONS

Product	Indoor Step Light	
Ordering Code	PLSH3W	PLSH3B
Power (W)	3	3
Colour Temperature (K)	3000	3000
Lumen Output (lm)	Round -200lm Semi Round - 90lm Strip - 80lm	Round -200lm Semi Round - 90lm Strip - 80lm
CRI	>90	>90
Beam Angle	30°	30°
Dimming	Non Dimming	Non Dimming
LED Type	SMD	SMD
IP Rating	IP54	IP54
IK Rating	-	-
Input Voltage	220-240V AC	220-240V AC
Electrical Class	Class III	Class III
Power Factor	0.5	0.5
Operating Temperature	-20°~45°C	-20°~45°C
Lifetime (hr)	50,000	50,000
Installation	Recessed	Recessed
Dimensions (mm)	Ø54 x 31	Ø54 x 31
Fitting Colour	White	Black

PURE INDOOR STEP LIGHT RANGE

Magnetic Faceplate Options



Ø55 Round Faceplate
Round Optics
PLSHF1W - White
PLSHF1B - Black



Ø55 Round Faceplate
Semi-Round Optics
PLSHF2W - White
PLSHF2B - Black



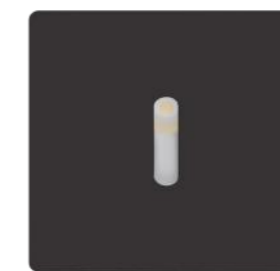
Ø55 Round Faceplate
Strip Optics
PLSHF3W - White
PLSHF3B - Black



55 x 55mm Square Faceplate
Round Optics
PLSHF4W - White
PLSHF4B - Black



55 x 55mm Square Faceplate
Semi-Round Optics
PLSHF5W - White
PLSHF5B - Black



55 x 55mm Square Faceplate
Strip Optics
PLSHF6W - White
PLSHF6B - Black



OUTDOOR SPOT LIGHTS

Our outdoor spot lights enhance visibility and safety around your home. Energy-efficient, long-lasting, and durable, these spot lights offer great flexibility with options for single or twin spots, various colour selections, and sensor features. Illuminate your outdoor spaces with our versatile and reliable spot lights.

76 PURE Outdoor Spot Lights

81 PURE Luxe Spot Lights

PURE OUTDOOR SPOT LIGHT RANGE

Single CCT Selectable LED Spot Lights



13W Single Spot Light
Surface Mounted - White
PLS13WW



13W Single Spot Light
Surface Mounted - Black
PLS13WB

FEATURES

- Double insulated
- PC body with PC diffuser
- Ceiling or wall mounted
- CCT selectable, 3000K, 4000K, 5700K
- Quick fit mount
- 240V hardwire

CERTIFICATIONS



PRODUCT INFORMATION



TECHNICAL SPECIFICATIONS

Product	Single Spot Light	
Ordering Code	PLS13WW	PLS13WB
Power (W)	13	13
Colour Temperature (K)	3000 / 4000 / 5700	3000 / 4000 / 5700
Lumen Output (lm)	850	850
CRI	>80	>80
Beam Angle	120°	120°
Dimming	Non Dimming	Non Dimming
LED Type	COB	COB
IP Rating	IP65	IP65
IK Rating	IK08	IK08
Input Voltage	220-240V AC	220-240V AC
Electrical Class	Class II	Class II
Power Factor	0.9	0.9
Operating Temperature	-20°~40°C	-20°~40°C
Lifetime (hr)	50,000	50,000
Installation	Surface Mount	Surface Mount
Dimensions (mm)	Ø132 x 170	Ø132 x 170
Fitting Colour	White	Black

PURE OUTDOOR SPOT LIGHT RANGE

Single CCT Selectable LED Spot Lights with Sensor



13W Single Spot Light with Sensor
Surface Mounted - White
PLS13WSW



13W Single Spot Light with Sensor
Surface Mounted - Black
PLS13WSB

FEATURES

- Double insulated
- Detection range 180° / 12m
- Lux level and time duration adjustable
- PC body with PC diffuser
- Ceiling or wall mounted
- CCT selectable, 3000K, 4000K, 5700K
- Quick fit mount
- 240V hardwire

CERTIFICATIONS



PRODUCT INFORMATION



TECHNICAL SPECIFICATIONS

Product	Single Spot Light with Sensor	
Ordering Code	PLS13WSW	PLS13WSB
Power (W)	13	13
Colour Temperature (K)	3000 / 4000 / 5700	3000 / 4000 / 5700
Lumen Output (lm)	850	850
CRI	>80	>80
Beam Angle	120°	120°
Dimming	Non Dimming	Non Dimming
LED Type	COB	COB
IP Rating	IP54	IP54
IK Rating	IK08	IK08
Input Voltage	220-240V AC	220-240V AC
Electrical Class	Class II	Class II
Power Factor	0.9	0.9
Operating Temperature	-20°~40°C	-20°~40°C
Lifetime (hr)	50,000	50,000
Installation	Surface Mount	Surface Mount
Dimensions (mm)	Ø132 x 230	Ø132 x 230
Fitting Colour	White	Black

PURE OUTDOOR SPOT LIGHT RANGE

Twin CCT Selectable LED Spot Lights



2 x 13W Twin Spot Light
Surface Mounted - White
PLS26WW



2 x 13W Twin Spot Light
Surface Mounted - Black
PLS26WB



2 x 13W Twin Spot Light with Sensor
Surface Mounted - White
PLS26WSW



2 x 13W Twin Spot Light with Sensor
Surface Mounted - Black
PLS26WSB

FEATURES

- Double insulated
- PC body with PC diffuser
- Ceiling or wall mounted
- CCT selectable, 3000K, 4000K, 5700K
- Quick fit mount
- 240V hardwire

CERTIFICATIONS



PRODUCT INFORMATION



TECHNICAL SPECIFICATIONS

Product	Twin Spot Light	
Ordering Code	PLS26WW	PLS26WB
Power (W)	26	26
Colour Temperature (K)	3000 / 4000 / 5700	3000 / 4000 / 5700
Lumen Output (lm)	1700	1700
CRI	>80	>80
Beam Angle	120°	120°
Dimming	Non Dimming	Non Dimming
LED Type	COB	COB
IP Rating	IP65	IP65
IK Rating	IK08	IK08
Input Voltage	220-240V AC	220-240V AC
Electrical Class	Class II	Class II
Power Factor	0.9	0.9
Operating Temperature	-20°~40°C	-20°~40°C
Lifetime (hr)	50,000	50,000
Installation	Surface Mount	Surface Mount
Dimensions (mm)	Ø132 x 170 x 245	Ø132 x 170 x 245
Fitting Colour	White	Black

FEATURES

- Double insulated
- Detection range 180° / 12m
- Lux level and time duration adjustable
- PC body with PC diffuser
- Ceiling or wall mounted
- CCT selectable, 3000K, 4000K, 5700K
- Quick fit mount
- 240V hardwire

CERTIFICATIONS



PRODUCT INFORMATION



TECHNICAL SPECIFICATIONS

Product	Twin Spot Light with Sensor	
Ordering Code	PLS26WSW	PLS26WSB
Power (W)	26	26
Colour Temperature (K)	3000 / 4000 / 5700	3000 / 4000 / 5700
Lumen Output (lm)	1700	1700
CRI	>80	>80
Beam Angle	120°	120°
Dimming	Non Dimming	Non Dimming
LED Type	COB	COB
IP Rating	IP54	IP54
IK Rating	IK08	IK08
Input Voltage	220-240V AC	220-240V AC
Electrical Class	Class II	Class II
Power Factor	0.9	0.9
Operating Temperature	-20°~40°C	-20°~40°C
Lifetime (hr)	50,000	50,000
Installation	Surface Mount	Surface Mount
Dimensions (mm)	Ø132 x 215x 245	Ø132 x 215x 245
Fitting Colour	White	Black



PURE LUXE RANGE
Single CCT Selectable LED Spot Lights



8W Single Spot Light
Surface Mounted - White
PLUXS8W



8W Single Spot Light
Surface Mounted - Black
PLUXS8B

FEATURES

- Single adjustable spot light, rotatable head with a 90° tilt.
- Powder coated aluminium body with tempered glass diffuser
- CCT selectable 3000K, 4500K, 6000K

CERTIFICATIONS



PRODUCT INFORMATION

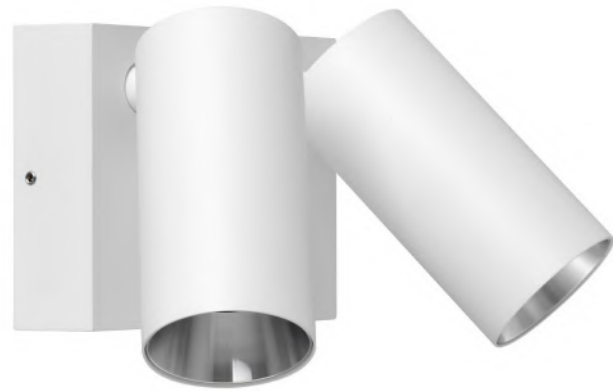


TECHNICAL SPECIFICATIONS

Product	Luxe Single Spot Light	
Ordering Code	PLUXS8W	PLUXS8B
Power (W)	8	8
Colour Temperature (K)	3000 / 4500 / 6000	3000 / 4500 / 6000
Lumen Output (lm)	500	500
CRI	>80	>80
Beam Angle	60°	60°
Dimming	Non Dimming	Non Dimming
LED Type	COB	COB
IP Rating	IP65	IP65
IK Rating	-	-
Input Voltage	220-240V AC	220-240V AC
Electrical Class	Class I	Class I
Power Factor	0.9	0.9
Operating Temperature	-20°~45°C	-20°~45°C
Lifetime (hr)	30,000	30,000
Installation	Surface Mount	Surface Mount
Dimensions (mm)	110 x 90	110 x 90
Fitting Colour	White	Black

PURE LUXE RANGE

Twin CCT Selectable LED Spot Lights



2 x 8W Twin Spot Light
Surface Mounted - White
PLUXS16W



2 x 8W Twin Spot Light
Surface Mounted - Black
PLUXS16B



2 x 8W Twin Spot Light with Sensor
Surface Mounted - White
PLUXS16WS



2 x 8W Twin Spot Light with Sensor
Surface Mounted - Black
PLUXS16BS

FEATURES

- Double adjustable spot light, rotatable head with a 90° tilt.
- Powder coated aluminium body with tempered glass diffuser
- CCT selectable 3000K, 4500K, 6000K

CERTIFICATIONS



PRODUCT INFORMATION



TECHNICAL SPECIFICATIONS

Product	Luxe Twin Spot Light	
Ordering Code	PLUXS16W	PLUXS16B
Power (W)	16	16
Colour Temperature (K)	3000 / 4500 / 6000	3000 / 4500 / 6000
Lumen Output (lm)	1000	1000
CRI	>80	>80
Beam Angle	60°	60°
Dimming	Non Dimming	Non Dimming
LED Type	COB	COB
IP Rating	IP65	IP65
IK Rating	-	-
Input Voltage	220-240V AC	220-240V AC
Electrical Class	Class I	Class I
Power Factor	0.9	0.9
Operating Temperature	-20°~45°C	-20°~45°C
Lifetime (hr)	30,000	30,000
Installation	Surface Mount	Surface Mount
Dimensions (mm)	130 x 100	130 x 100
Fitting Colour	White	Black

FEATURES

- Detection range 120° / 10m
- Lux and time settings on sensor with manual override.
- Double adjustable spot light, rotatable head with a 90° tilt.
- Powder coated aluminium body with tempered glass diffuser
- CCT selectable 3000K, 4500K, 6000K

CERTIFICATIONS



PRODUCT INFORMATION



TECHNICAL SPECIFICATIONS

Product	Luxe Twin Spot Light with Sensor	
Ordering Code	PLUXS16WS	PLUXS16BS
Power (W)	16	16
Colour Temperature (K)	3000 / 4500 / 6000	3000 / 4500 / 6000
Lumen Output (lm)	1000	1000
CRI	>80	>80
Beam Angle	60°	60°
Dimming	Non Dimming	Non Dimming
LED Type	COB	COB
IP Rating	IP65	IP65
IK Rating	-	-
Input Voltage	220-240V AC	220-240V AC
Electrical Class	Class I	Class I
Power Factor	0.9	0.9
Operating Temperature	-20°~45°C	-20°~45°C
Lifetime (hr)	30,000	30,000
Installation	Surface Mount	Surface Mount
Dimensions (mm)	130 x 100	130 x 100
Fitting Colour	White	Black



OUTDOOR WALL LIGHTS

Outdoor wall lights are the perfect way to enhance the beauty and functionality of your exterior spaces. Designed to add both style and security, these lights create a warm and inviting ambiance while illuminating pathways, entrances, and outdoor entertaining areas. Elevate your outdoor aesthetic and make a lasting impression with outdoor wall lights.

86 PURE Adjustable Wall Lights

87 PURE Rectangle Wall Lights

88 PURE Round Wall Lights

89 PURE Low Profile Wall Lights

90 PURE Cone Wall Lights

92 PURE Urban Square Wall Lights

93 PURE Urban Rectangle Wall Lights

94 PURE Eco Bunker Lights

96 PURE Platinum Bunker Lights

PURE OUTDOOR WALL LIGHT RANGE

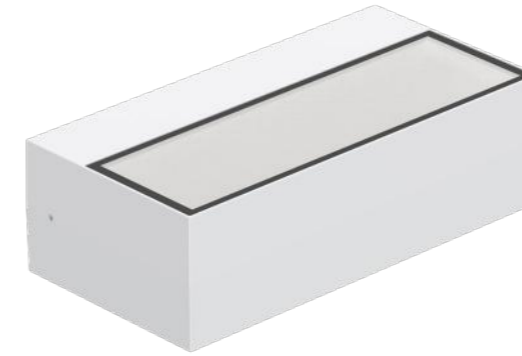
Adjustable LED Wall Lights



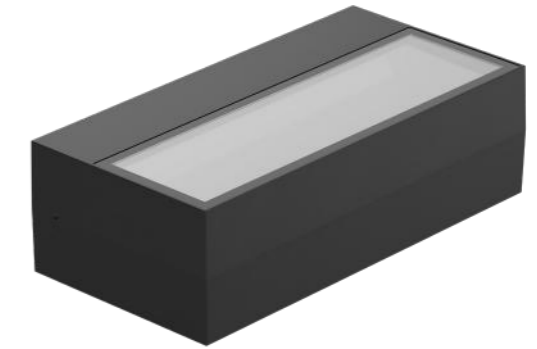
10W Adjustable Wall Light
White
PLWLTW10



10W Adjustable Wall Light
Black
PLWLTB10



10W Rectangle Wall Light
White
PLWLDW10



10W Rectangle Wall Light
Black
PLWLDB10

FEATURES

- 240° adjustable light
- Aluminium body with multi-louved frosted tempered glass
- 240V hardwire

CERTIFICATIONS



PRODUCT INFORMATION



TECHNICAL SPECIFICATIONS

Product	Adjustable Wall Light	
Ordering Code	PLWLTW10	PLWLTB10
Power (W)	10	10
Colour Temperature (K)	3000	3000
Lumen Output (lm)	1100	1100
CRI	>80	>80
Beam Angle	90°	90°
Dimming	Non Dimming	Non Dimming
LED Type	SMD	SMD
IP Rating	IP65	IP65
IK Rating	IK06	IK06
Input Voltage	220-240V AC	220-240V AC
Electrical Class	Class I	Class I
Power Factor	0.9	0.9
Operating Temperature	-20°~45°C	-20°~45°C
Lifetime (hr)	50,000	50,000
Installation	Surface Mount	Surface Mount
Dimensions (mm)	203 x 80 x 130	203 x 80 x 130
Fitting Colour	White	Black

FEATURES

- Direct / indirect wall light
- Powder coated aluminium body with glass diffuser
- CCT selectable, 3000K, 4000K, 5700K
- 240V hardwire

CERTIFICATIONS



PRODUCT INFORMATION



TECHNICAL SPECIFICATIONS

Product	Up / Down Rectangle Wall Light	
Ordering Code	PLWLDW10	PLWLDB10
Power (W)	10	10
Colour Temperature (K)	3000 / 4000 / 5700	3000 / 4000 / 5700
Lumen Output (lm)	600-750	600-750
CRI	>80	>80
Beam Angle	60° x 115° x 40°	60° x 115° x 40°
Dimming	Non Dimming	Non Dimming
LED Type	SMD	SMD
IP Rating	IP65	IP65
IK Rating	IK06	IK06
Input Voltage	220-240V AC	220-240V AC
Electrical Class	Class I	Class I
Power Factor	0.9	0.9
Operating Temperature	-20°~40°C	-20°~40°C
Lifetime (hr)	50,000	50,000
Installation	Surface Mount	Surface Mount
Dimensions (mm)	200 x 100 x 60	200 x 100 x 60
Fitting Colour	White	Black

PURE OUTDOOR WALL LIGHT RANGE

Up / Down Round CCT Selectable LED Wall Lights



15W Round Wall Light
White
PLWLUDW15



15W Round Wall Light
Black
PLWLUB15

FEATURES

- Direct / indirect wall light
- Powder coated aluminium body with glass diffuser
- CCT selectable, 3000K, 4000K, 5700K
- 240V hardwire

CERTIFICATIONS



PRODUCT INFORMATION



TECHNICAL SPECIFICATIONS

Product	Up / Down Round Wall Light	
Ordering Code	PLWLUDW15	PLWLUB15
Power (W)	15	15
Colour Temperature (K)	3000 / 4000 / 5700	3000 / 4000 / 5700
Lumen Output (lm)	1350-1700	1350-1700
CRI	>80	>80
Beam Angle	45°	45°
Dimming	Non Dimming	Non Dimming
LED Type	SMD	SMD
IP Rating	IP65	IP65
IK Rating	IK06	IK06
Input Voltage	220-240V AC	220-240V AC
Electrical Class	Class I	Class I
Power Factor	0.9	0.9
Operating Temperature	-20°~40°C	-20°~40°C
Lifetime (hr)	50,000	50,000
Installation	Surface Mount	Surface Mount
Dimensions (mm)	70 x 179 x 95	70 x 179 x 95
Fitting Colour	White	Black

PURE OUTDOOR WALL LIGHT RANGE

Up / Down Low Profile CCT Selectable LED Wall Lights



2 x 3W Low Profile Wall Light
White
PLWLS6W



2 x 3W Low Profile Wall Light
Black
PLWLS6B

FEATURES

- Direct / indirect wall light
- Powder coated aluminium body with glass diffuser
- CCT selectable, 3000K, 4000K, 5700K
- 240V hardwire

CERTIFICATIONS



PRODUCT INFORMATION

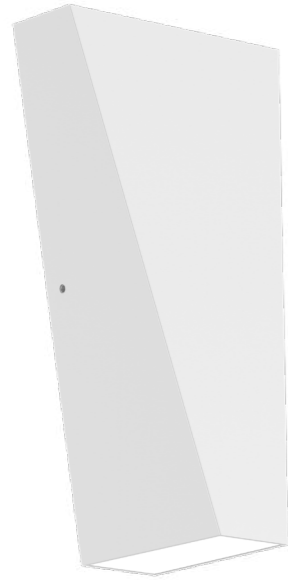


TECHNICAL SPECIFICATIONS

Product	Up / Down Low Profile Wall Light	
Ordering Code	PLWLS6W	PLWLS6B
Power (W)	6	6
Colour Temperature (K)	3000 / 4000 / 5700	3000 / 4000 / 5700
Lumen Output (lm)	530-680	480-620
CRI	>80	>80
Beam Angle	29° x 77° x 8°	29° x 77° x 8°
Dimming	Non Dimming	Non Dimming
LED Type	SMD	SMD
IP Rating	IP65	IP65
IK Rating	IK08	IK08
Input Voltage	220-240V AC	220-240V AC
Electrical Class	Class I	Class I
Power Factor	0.9	0.9
Operating Temperature	-20°~45°C	-20°~45°C
Lifetime (hr)	50,000	50,000
Installation	Surface Mount	Surface Mount
Dimensions (mm)	135 x 90 x 30.5	135 x 90 x 30.5
Fitting Colour	White	Black

PURE OUTDOOR WALL LIGHT RANGE

Up / Down Cone CCT Selectable LED Wall Lights



2 x 3W Cone Wall Light
White
PLWLC6W



2 x 3W Cone Wall Light
Black
PLWLC6B

FEATURES

- Direct / indirect wall light
- Powder coated aluminium body with glass diffuser
- CCT selectable, 3000K, 4000K, 5700K
- 240V hardwire

CERTIFICATIONS



PRODUCT INFORMATION



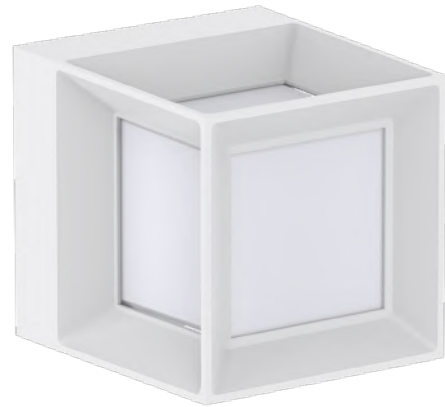
TECHNICAL SPECIFICATIONS

Product	Up / Down Cone Wall Light	
Ordering Code	PLWLC6W	PLWLC6B
Power (W)	6	6
Colour Temperature (K)	3000 / 4000 / 5700	3000 / 4000 / 5700
Lumen Output (lm)	290-460	290-460
CRI	>80	>80
Beam Angle	120°	120°
Dimming	Non Dimming	Non Dimming
LED Type	SMD	SMD
IP Rating	IP65	IP65
IK Rating	IK05	IK05
Input Voltage	220-240V AC	220-240V AC
Electrical Class	Class I	Class I
Power Factor	0.9	0.9
Operating Temperature	-20°~45°C	-20°~45°C
Lifetime (hr)	50,000	50,000
Installation	Surface Mount	Surface Mount
Dimensions (mm)	100 x 80 x 200	100 x 80 x 200
Fitting Colour	White	Black

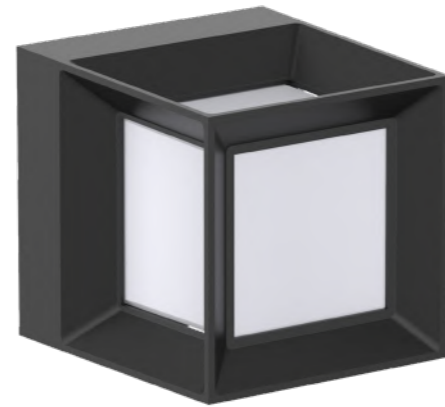


PURE OUTDOOR WALL LIGHT RANGE

Urban Square CCT Selectable LED Wall Lights



8W Urban Square Wall Light
White
PLWLSQ8W



8W Urban Square Wall Light
Black
PLWLSQ8B



15W Urban Rectangle Wall Light
White
PLWLR15W



15W Urban Rectangle Wall Light
Black
PLWLR15B

FEATURES

- 5-sided wall light
- Powder coated aluminium body with PC diffuser
- CCT selectable, 3000K, 4000K, 5700K
- 240V hardwire - internal flicker-free driver

CERTIFICATIONS



PRODUCT INFORMATION



TECHNICAL SPECIFICATIONS

Product	Urban Square Wall Light	
Ordering Code	PLWLSQ8W	PLWLSQ8B
Power (W)	8	8
Colour Temperature (K)	3000 / 4000 / 5700	3000 / 4000 / 5700
Lumen Output (lm)	590-750	590-750
CRI	>80	>80
Beam Angle	200°	200°
Dimming	Triac Dimming	Triac Dimming
LED Type	SMD	SMD
IP Rating	IP65	IP65
IK Rating	IK06	IK06
Input Voltage	220-240V AC	220-240V AC
Electrical Class	Class I	Class I
Power Factor	0.9	0.9
Operating Temperature	-20°~45°C	-20°~45°C
Lifetime (hr)	50,000	50,000
Installation	Surface Mount	Surface Mount
Dimensions (mm)	110 x 110 x 120	110 x 110 x 120
Fitting Colour	White	Black

FEATURES

- 5-sided wall light
- Powder coated aluminium body with PC diffuser
- CCT selectable, 3000K, 4000K, 5700K
- 240V hardwire - internal flicker-free driver

CERTIFICATIONS



PRODUCT INFORMATION



PURE OUTDOOR WALL LIGHT RANGE

Urban Rectangle CCT Selectable LED Wall Lights

TECHNICAL SPECIFICATIONS

Product	Urban Rectangle Wall Light	
Ordering Code	PLWLR15W	PLWLR15B
Power (W)	15	15
Colour Temperature (K)	3000 / 4000 / 5700	3000 / 4000 / 5700
Lumen Output (lm)	1260-1490	1260-1490
CRI	>80	>80
Beam Angle	200°	200°
Dimming	Triac Dimming	Triac Dimming
LED Type	SMD	SMD
IP Rating	IP65	IP65
IK Rating	IK06	IK06
Input Voltage	220-240V AC	220-240V AC
Electrical Class	Class I	Class I
Power Factor	0.9	0.9
Operating Temperature	-20°~45°C	-20°~45°C
Lifetime (hr)	50,000	50,000
Installation	Surface Mount	Surface Mount
Dimensions (mm)	250 x 110 x 120	250 x 110 x 120
Fitting Colour	White	Black



8W Oval Bunker Light
White
PLWLB8OW



8W Oval Bunker Light
Black
PLWLB8OB



8W Round Bunker Light
White
PLWLB8RW



8W Round Bunker Light
Black
PLWLB8RB

FEATURES

- Wattage selectable 8W /12W
- PC body with PC diffuser
- CCT selectable, 3000K, 4000K, 5000K
- 240V hardwire - internal flicker-free driver

TECHNICAL SPECIFICATIONS

Product	Eco Oval Bunker Light	
Ordering Code	PLWLB8OW	PLWLB8OB
Power (W)	8 / 12	8 / 12
Colour Temperature (K)	3000 / 4000 / 5000	3000 / 4000 / 5000
Lumen Output (lm)	720-1080	720-1080
CRI	>80	>80
Beam Angle	120°	120°
Dimming	Non Dimming	Non Dimming
LED Type	SMD	SMD
IP Rating	IP54	IP54
IK Rating	IK06	IK06
Input Voltage	220-240V AC	220-240V AC
Electrical Class	Class II	Class II
Power Factor	0.5	0.5
Operating Temperature	-20°~45°C	-20°~45°C
Lifetime (hr)	25,000	25,000
Installation	Surface Mount	Surface Mount
Dimensions (mm)	200 x 100 x 60	200 x 100 x 60
Fitting Colour	White	Black

CERTIFICATIONS



PRODUCT INFORMATION



FEATURES

- Wattage selectable 8W /12W
- PC body with PC diffuser
- CCT selectable, 3000K, 4000K, 5000K
- 240V hardwire - internal flicker-free driver

TECHNICAL SPECIFICATIONS

Product	Eco Round Bunker Light	
Ordering Code	PLWLB8RW	PLWLB8RB
Power (W)	8 / 12	8 / 12
Colour Temperature (K)	3000 / 4000 / 5000	3000 / 4000 / 5000
Lumen Output (lm)	720-1080	720-1080
CRI	>80	>80
Beam Angle	120°	120°
Dimming	Non Dimming	Non Dimming
LED Type	SMD	SMD
IP Rating	IP54	IP54
IK Rating	IK06	IK06
Input Voltage	220-240V AC	220-240V AC
Electrical Class	Class II	Class II
Power Factor	0.5	0.5
Operating Temperature	-20°~45°C	-20°~45°C
Lifetime (hr)	25,000	25,000
Installation	Surface Mount	Surface Mount
Dimensions (mm)	Ø170 x 60	Ø170 x 60
Fitting Colour	White	Black

CERTIFICATIONS



PRODUCT INFORMATION



PURE PLATINUM RANGE

CCT Selectable LED Bunker Lights



10W Oval Bunker Light
White
PLWLBW10



10W Oval Bunker Light
Black
PLWLBB10

FEATURES

- PC body with PC diffuser
- CCT selectable, 3000K, 4000K, 5700K
- 240V hardwire - internal flicker-free driver

CERTIFICATIONS



PRODUCT INFORMATION



TECHNICAL SPECIFICATIONS

Product	Platinum Oval Bunker Light	
Ordering Code	PLWLBW10	PLWLBB10
Power (W)	10	10
Colour Temperature (K)	3000 / 4000 / 5700	3000 / 4000 / 5700
Lumen Output (lm)	900-1100	900-1100
CRI	>80	>80
Beam Angle	120°	120°
Dimming	Non Dimming	Non Dimming
LED Type	SMD	SMD
IP Rating	IP65	IP65
IK Rating	IK08	IK08
Input Voltage	220-240V AC	220-240V AC
Electrical Class	Class II	Class II
Power Factor	0.9	0.9
Operating Temperature	-20°~45°C	-20°~45°C
Lifetime (hr)	50,000	50,000
Installation	Surface Mount	Surface Mount
Dimensions (mm)	200 x 120 x 66	200 x 120 x 66
Fitting Colour	White	Black

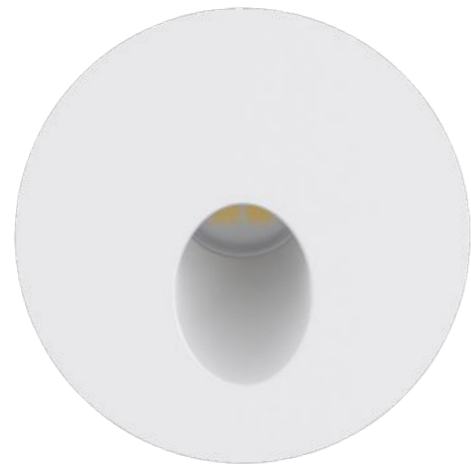




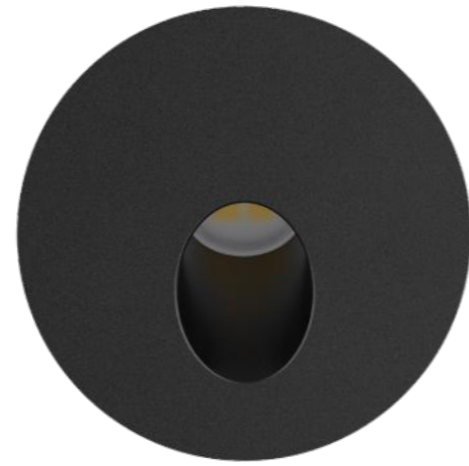
OUTDOOR STEP LIGHTS

Ideal for pathways, entranceways, and outdoor stairs, LED step lights are a subtle option for brightening up small spaces. We offer a range of styles in both black and white, ensuring you find the perfect match for your outdoor decor. Enhance safety and visibility around your home with our versatile step lights.

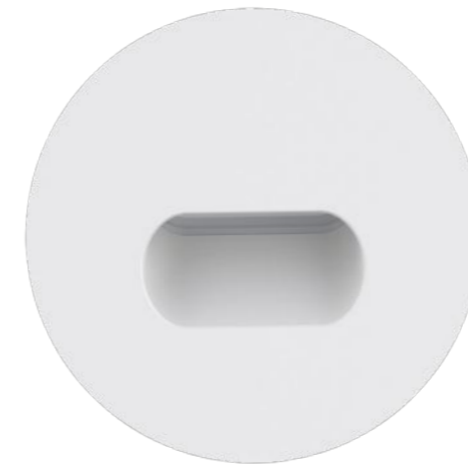
100 PURE Outdoor Step Lights



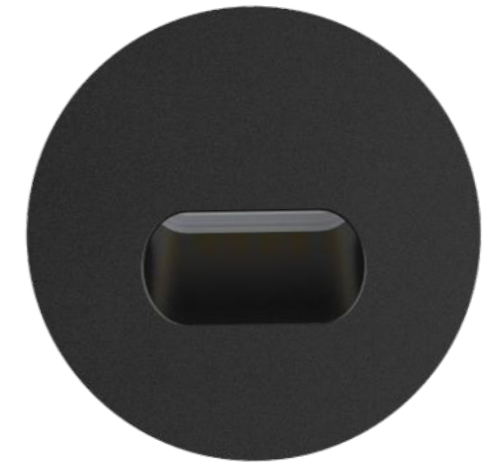
2W IP65 Step Light
Oval - White
PLSH1X2W



2W IP65 Step Light
Oval - Black
PLSH1X2B



2W IP65 Step Light
Elliptical - White
PLSH2X2W



2W IP65 Step Light
Elliptical - Black
PLSH2X2B

OUTDOOR STEP LIGHT ACCESSORIES



Silicone ring and plastic housing
Ø52 x 80mm - White
PLSHRW



Silicone ring and plastic housing
Ø52 x 80mm - Black
PLSHRB

FEATURES

- Compact design with aluminium body and PC diffuser
- Can be installed with supplied clip or optional plastic housing
- 24V - driver required

CERTIFICATIONS



PRODUCT INFORMATION

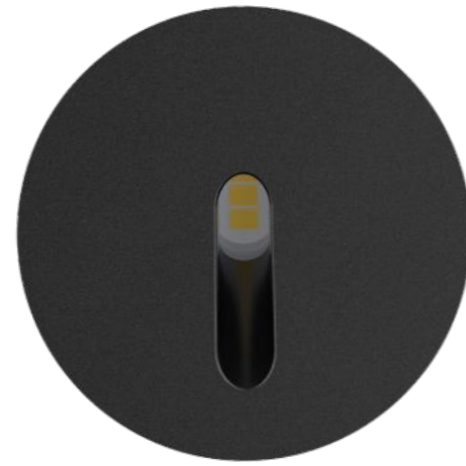


TECHNICAL SPECIFICATIONS

Product	Outdoor Step Light			
Ordering Code	PLSH1X2W	PLSH1X2B	PLSH2X2W	PLSH2X2B
Power (W)	2	2	2	2
Colour Temperature (K)	3000	3000	3000	3000
Lumen Output (lm)	60	60	55	55
CRI	>80	>80	>80	>80
Beam Angle	40°	40°	40°	40°
Dimming	Non Dimming	Non Dimming	Non Dimming	Non Dimming
LED Type	SMD	SMD	SMD	SMD
IP Rating	IP65	IP65	IP65	IP65
IK Rating	-	-	-	-
Input Voltage	24V DC	24V DC	24V DC	24V DC
Electrical Class	Class III	Class III	Class III	Class III
Power Factor	-	-	-	-
Operating Temperature	-20°~45°C	-20°~45°C	-20°~45°C	-20°~45°C
Lifetime (hr)	50,000	50,000	50,000	50,000
Installation	Recessed Mount	Recessed Mount	Recessed Mount	Recessed Mount
Dimensions (mm)	Ø55 x 42	Ø55 x 42	Ø55 x 42	Ø55 x 42
Cutout (mm)	Ø44 x 65	Ø44 x 65	Ø44 x 65	Ø44 x 65
Fitting Colour	White	Black	White	Black



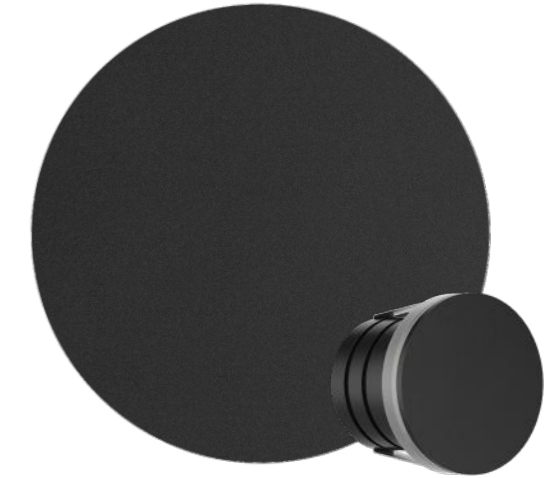
2W IP65 Step Light Strip - White
PLSH3X2W



2W IP65 Step Light Strip - Black
PLSH3X2B



2W IP65 Step Light Edge - White
PLSH4X2W



2W IP65 Step Light Edge - Black
PLSH4X2B

OUTDOOR STEP LIGHT ACCESSORIES



Silicone ring and plastic housing
Ø52 x 80mm - White
PLSHRW



Silicone ring and plastic housing
Ø52 x 80mm - Black
PLSHRB

FEATURES

- Compact design with aluminium body and glass diffuser
- Can be installed with supplied clip or optional plastic housing
- 24V - driver required

CERTIFICATIONS



PRODUCT INFORMATION

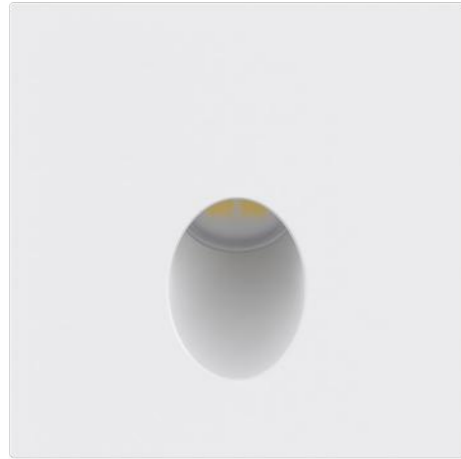


TECHNICAL SPECIFICATIONS

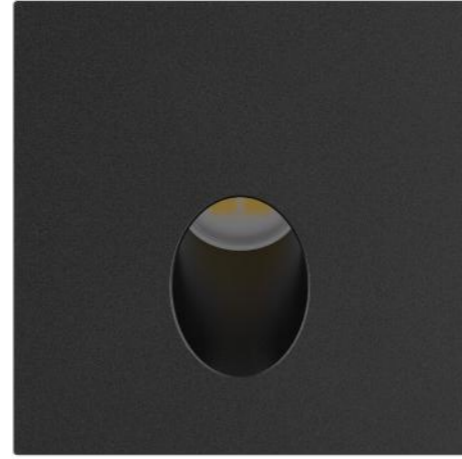
Product	Outdoor Step Light			
	PLSH3X2W	PLSH3X2B	PLSH4X2W	PLSH4X2B
Ordering Code	PLSH3X2W	PLSH3X2B	PLSH4X2W	PLSH4X2B
Power (W)	2	2	2	2
Colour Temperature (K)	3000	3000	3000	3000
Lumen Output (lm)	20	20	40	40
CRI	>80	>80	>80	>80
Beam Angle	30°	30°	180°	180°
Dimming	Non Dimming	Non Dimming	Non Dimming	Non Dimming
LED Type	SMD	SMD	SMD	SMD
IP Rating	IP65	IP65	IP65	IP65
IK Rating	-	-	-	-
Input Voltage	24V DC	24V DC	24V DC	24V DC
Electrical Class	Class III	Class III	Class III	Class III
Power Factor	-	-	-	-
Operating Temperature	-20°~45°C	-20°~45°C	-20°~45°C	-20°~45°C
Lifetime (hr)	50,000	50,000	50,000	50,000
Installation	Recessed Mount	Recessed Mount	Recessed Mount	Recessed Mount
Dimensions (mm)	Ø55 x 42	Ø55 x 42	Ø55 x 50	Ø55 x 50
Cutout (mm)	Ø44 x 65	Ø44 x 65	Ø44 x 65	Ø44 x 65
Fitting Colour	White	Black	White	Black

PURE OUTDOOR STEP LIGHT RANGE

24V IP65 Outdoor LED Step Lights



2W IP65 Step Light
Square Oval - White
PLSH5X2W



2W IP65 Step Light
Square Oval - Black
PLSH5X2B

FEATURES

- Compact design with aluminium body and PC diffuser
- Can be installed with supplied clip or optional plastic housing
- 24V - driver required

CERTIFICATIONS



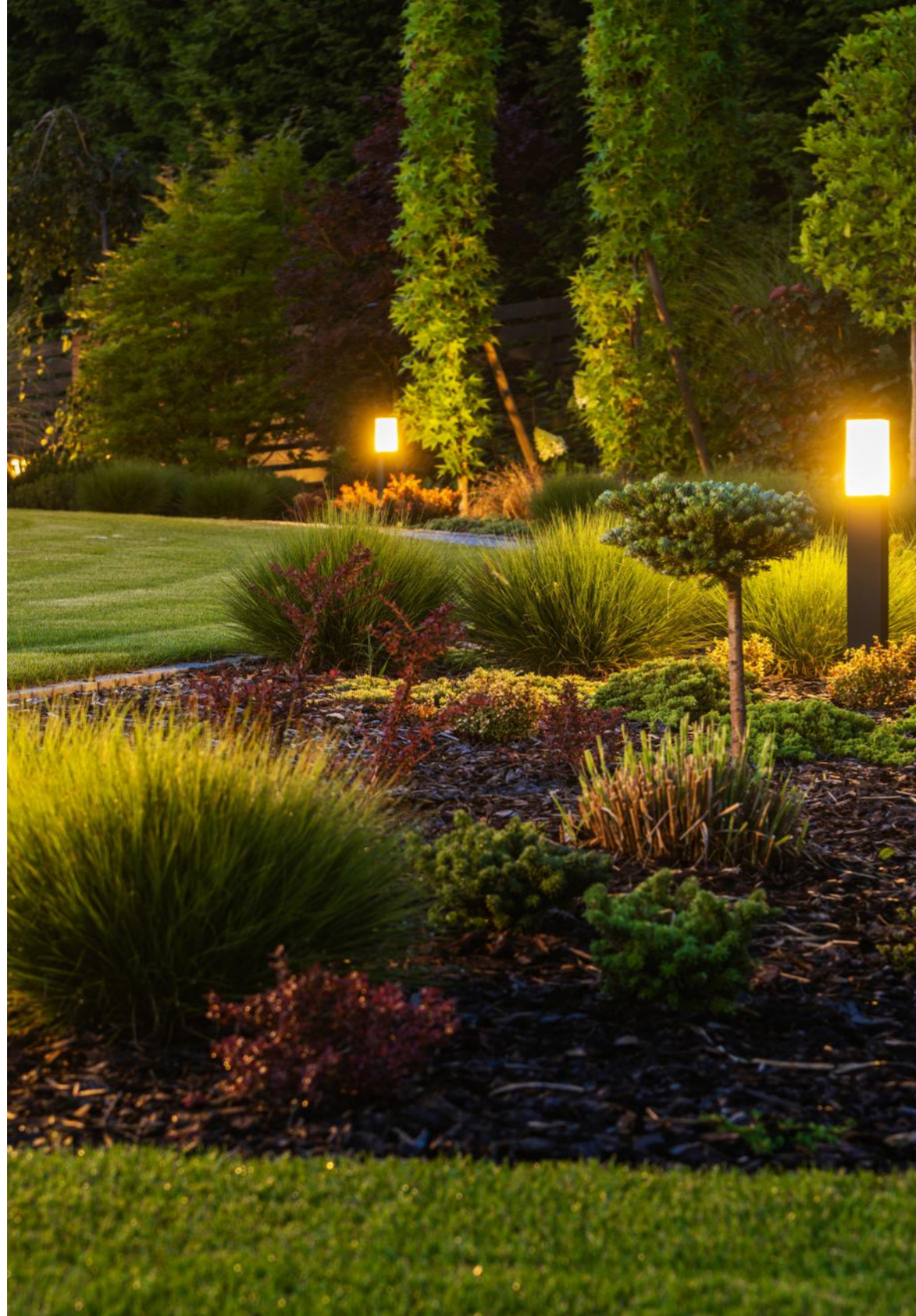
PRODUCT INFORMATION



TECHNICAL SPECIFICATIONS

Product	Outdoor Step Light	
	PLSH5X2W	PLSH5X2B
Ordering Code	PLSH5X2W	PLSH5X2B
Power (W)	2	2
Colour Temperature (K)	3000	3000
Lumen Output (lm)	60	60
CRI	>80	>80
Beam Angle	40°	40°
Dimming	Non Dimming	Non Dimming
LED Type	SMD	SMD
IP Rating	IP65	IP65
IK Rating	-	-
Input Voltage	24V DC	24V DC
Electrical Class	Class III	Class III
Power Factor	-	-
Operating Temperature	-20°~45°C	-20°~45°C
Lifetime (hr)	50,000	50,000
Installation	Recessed Mount	Recessed Mount
Dimensions (mm)	55 x 55 x 42	55 x 55 x 42
Cutout (mm)	Ø44 x 65	Ø44 x 65
Fitting Colour	White	Black





BOLLARD LIGHTS

Bollard lights are an excellent choice for enhancing the look and safety of your outdoor spaces. Perfect for pathways, gardens, and driveways, these lights provide both style and functionality. Our range of bollard lights are energy-efficient and durable. Illuminate your outdoors with our versatile and elegant bollard lights.

108 PURE Bollard Lights

PURE BOLLARD RANGE

CCT Selectable LED Bollard / Pillar Lights

PURE BOLLARD RANGE

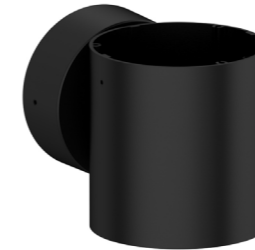
Accessories



8W Pillar / Bollard Head
Clear Diffuser
PLBL8C



8W Pillar / Bollard Head
Frosted Diffuser
PLBL8F



Wall Pilar Mount
Ø100mm Diameter
Black Aluminium
PLBLPW



Bollard Mount
Ø100mm x 400mm
Black Aluminium
Includes mounting base
PLBLP40



Bollard Mount
Ø100mm x 1000mm
Black Aluminium
Includes mounting base
PLBLP100

PLBL8F + PLBLP40



PLBL8C + PLBLPW



Ground Spike
for Bollard Bases
PLBLPGM

FEATURES

- Ø100mm diameter powder coated aluminium pillar with clear and frosted options
- Mounting options: wall pillar, 400mm bollard and 1000mm bollard
- CCT selectable 3000K, 4000K
- 240V - hardwire

CERTIFICATIONS

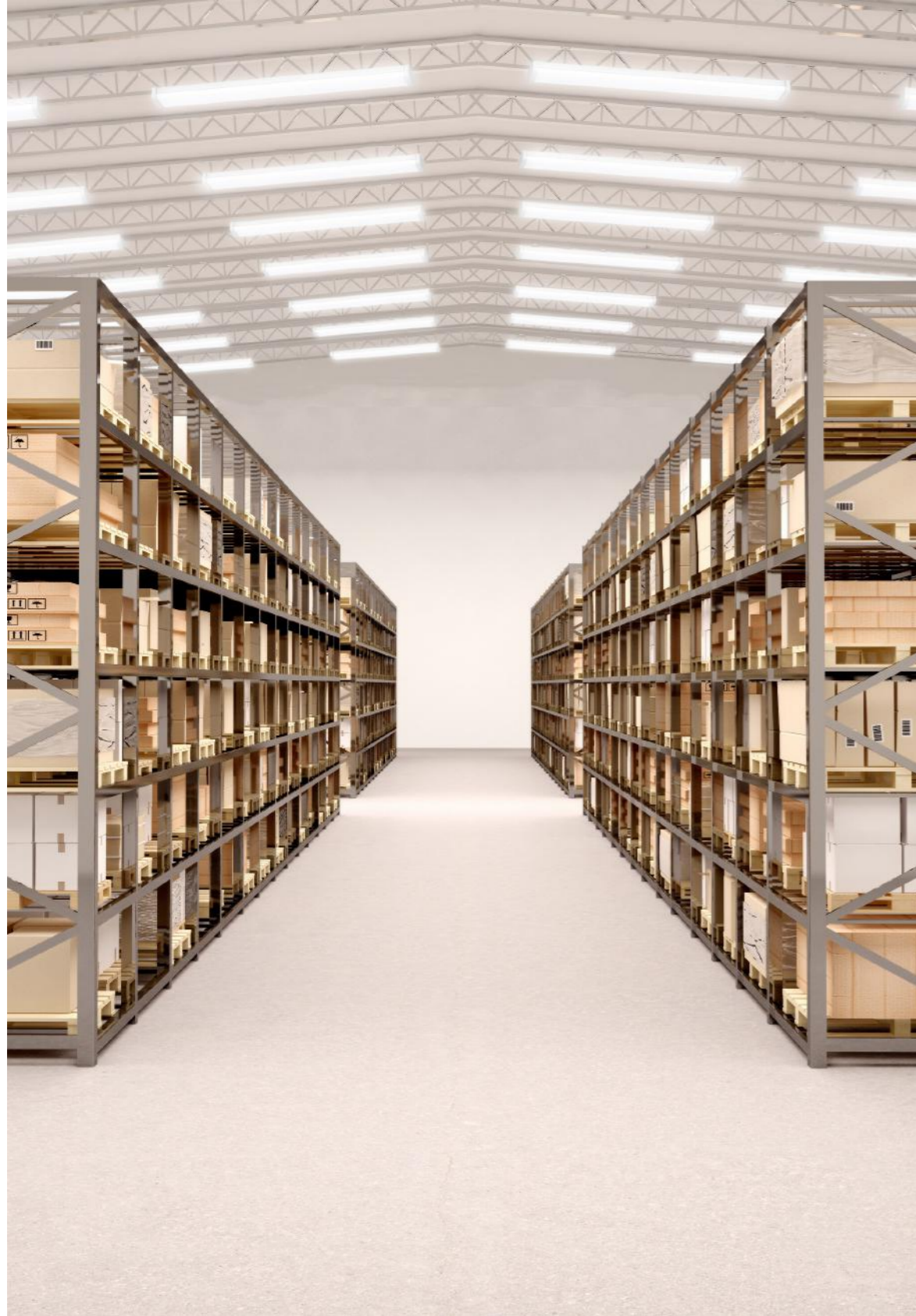


PRODUCT INFORMATION



TECHNICAL SPECIFICATIONS

Product	Pillar / Bollard Light	
Ordering Code	PLBL8C	PLBL8F
Power (W)	8	8
Colour Temperature (K)	3000 / 4000K	3000 / 4000K
Lumen Output (lm)	500-600	600-700
CRI	>80	>80
Beam Angle	360°	320°
Dimming	Triac Dimming	Triac Dimming
LED Type	SMD	SMD
IP Rating	IP65	IP65
IK Rating	IK08	IK08
Input Voltage	220-240V AC	220-240V AC
Electrical Class	Class I	Class I
Power Factor	0.88	0.88
Operating Temperature	-20°~45°C	-20°~45°C
Lifetime (hr)	50,000	50,000
Installation	Bollard / Pillar	Bollard / Pillar
Dimensions (mm)	Ø100 x 156	Ø100 x 156
Diffuser	Clear	Frosted



BATTENS AND UNDERVERANDAHS

Batten lights and underverandah lights are an easy, energy-efficient way to provide illumination over a large area. These low-maintenance, versatile, and practical lighting solutions are ideal for a range of applications in commercial, industrial, and residential environments. Enhance your space with our reliable and effective batten lighting options.

112 PURE Eco Batten Lights

113 PURE Elite Batten Lights

114 PURE Eco Wide Body Batten Lights

115 PURE Platinum Wide Body Batten Lights

116 PURE Slimline Batten Lights

117 PURE Slimline Underverandah Light

PURE ECO RANGE

CCT Selectable LED Batten Lights



38W Eco Batten
1200mm
PL-E120-38W

50W Eco Batten
1500mm
PL-E150-50W

FEATURES

- Low profile slim batten light
- Metal housing with PC diffuser
- CCT selectable, 4000K, 6000K
- Easy installation

CERTIFICATIONS



PRODUCT INFORMATION



TECHNICAL SPECIFICATIONS

Product	Eco Batten Light	
Ordering Code	PL-E120-38W	PL-E150-50W
Power (W)	38	50
Colour Temperature (K)	4000 / 6000	4000 / 6000
Lumen Output (lm)	5200-5700	7000-7500
CRI	>80	>80
Beam Angle	120°	120°
Dimming	Non Dimming	Non Dimming
LED Type	SMD	SMD
IP Rating	IP20	IP20
IK Rating	IK06	IK06
Input Voltage	220-240V AC	220-240V AC
Electrical Class	Class I	Class I
Power Factor	0.9	0.9
Operating Temperature	-20°~40°C	-20°~40°C
Lifetime (hr)	50,000	50,000
Installation	Surface Mount	Surface Mount
Dimensions (mm)	1200 x 65 x 66	1500 x 65 x 66

PURE ELITE RANGE

CCT Selectable LED Batten Lights



40W Elite Batten
1200mm
PL-U120-40W

50W Elite Batten
1500mm
PL-U150-50W

FEATURES

- Low profile slim batten light
- Metal housing with PC diffuser
- 4 fast release buttons for easy installation
- CCT selectable, 4000K, 6000K
- Emergency option available. See Emergency Lights

CERTIFICATIONS



PRODUCT INFORMATION



TECHNICAL SPECIFICATIONS

Product	Elite Batten Light	
Ordering Code	PL-U120-40W	PL-U150-50W
Power (W)	40	50
Colour Temperature (K)	4000 / 6000	4000 / 6000
Lumen Output (lm)	3800-4200	5500-6100
CRI	>80	>80
Beam Angle	120°	120°
Dimming	Non Dimming	Non Dimming
LED Type	SMD	SMD
IP Rating	IP20	IP20
IK Rating	IK08	IK08
Input Voltage	220-240V AC	220-240V AC
Electrical Class	Class I	Class I
Power Factor	0.9	0.9
Operating Temperature	-20°~45°C	-20°~45°C
Lifetime (hr)	50,000	50,000
Installation	Surface Mount	Surface Mount
Dimensions (mm)	1200 x 71 x 64	1500 x 71 x 64

PURE ECO RANGE

CCT Selectable LED Wide-Body Batten Lights



38W Eco Wide-Body Batten
1200mm
PL-EWB120-38W



50W Eco Wide-Body Batten
1500mm
PL-EWB150-50W

FEATURES

- Screwless design for convenient and easy installation
- Metal housing with PC diffuser
- CCT selectable, 4000K, 6000K
- Wide body - 124mm

CERTIFICATIONS



PRODUCT INFORMATION



TECHNICAL SPECIFICATIONS

Product	Eco Wide-Body Batten Light	
Ordering Code	PL-EWB120-38W	PL-EWB150-50W
Power (W)	38	50
Colour Temperature (K)	4000 / 6000	4000 / 6000
Lumen Output (lm)	3000-3800	4200-5000
CRI	>80	>80
Beam Angle	130°	130°
Dimming	Non Dimming	Non Dimming
LED Type	SMD	SMD
IP Rating	IP40	IP40
IK Rating	IK08	IK08
Input Voltage	220-240V AC	220-240V AC
Electrical Class	Class I	Class I
Power Factor	0.9	0.9
Operating Temperature	-20°~45°C	-20°~45°C
Lifetime (hr)	50,000	50,000
Installation	Surface Mount	Surface Mount
Dimensions (mm)	1200 x 124 x 60	1500 x 124 x 60

PURE PLATINUM RANGE

Low Glare CCT Selectable LED Wide-Body Batten Lights



31W Platinum Wide-Body Batten
1200mm
PL-UGR120-31W



36W Platinum Wide-Body Batten
1500mm
PL-UGR150-36W

FEATURES

- Low glare UGR<19 with excellent colour rendering, CRI>90
- CCT selectable, 4000K, 6000K
- Wattage selectable: 31W selectable between 22W, 25W, 28W and 31W. 36W selectable between 30W, 32W, 34W and 36W
- Metal housing with prismatic diffusers
- Wide body - 200mm

CERTIFICATIONS



PRODUCT INFORMATION



TECHNICAL SPECIFICATIONS

Product	Platinum Wide-Body Batten Light	
Ordering Code	PL-UGR120-31W	PL-UGR150-36W
Power (W)	31	36
Colour Temperature (K)	4000 / 6000	4000 / 6000
Lumen Output (lm)	3600-3800	4100-4250
UGR	<19	<19
CRI	>90	>90
Beam Angle	80°	80°
Dimming	Non Dimming	Non Dimming
LED Type	SMD	SMD
IP Rating	IP20	IP20
IK Rating	IK06	IK06
Input Voltage	220-240V AC	220-240V AC
Electrical Class	Class I	Class I
Power Factor	0.9	0.9
Operating Temperature	-20°~45°C	-20°~45°C
Lifetime (hr)	50,000	50,000
Installation	Surface Mount	Surface Mount
Dimensions (mm)	1200 x 200 x 96	1500 x 200 x 96

PURE BATTEN RANGE

Slimline LED Batten Lights



40 Slimline Batten
4000K
NW-LED220-YPC



40 Slimline Batten
6000K
CW-LED220-YPC

FEATURES

- Superior heat dissipation
- Built-in driver
- Integrated modular LED with PC/aluminium body and PC diffuser
- IP44 rated

CERTIFICATIONS



PRODUCT INFORMATION



TECHNICAL SPECIFICATIONS

Product	Slimline Batten Light	
Ordering Code	NW-LED220-YPC	CW-LED220-YPC
Power (W)	40	40
Colour Temperature (K)	4000	6000
Lumen Output (lm)	4400	4400
CRI	>80	>80
Beam Angle	120°	120°
Dimming	Non Dimming	Non Dimming
LED Type	SMD	SMD
IP Rating	IP44	IP44
IK Rating	IK08	IK08
Input Voltage	220-240V AC	220-240V AC
Electrical Class	Class I	Class I
Power Factor	0.95	0.95
Operating Temperature	-20°~40°C	-20°~40°C
Lifetime (hr)	50,000	50,000
Installation	Surface Mount	Surface Mount
Dimensions (mm)	1200 x 120 x 40	1500 x 120 x 40

PURE UNDERVERANDAH RANGE

IP65 Slimline LED Underverandah Lights



60W IP65 Slimline Underverandah
1500mm
PLUV1550

FEATURES

- PC housing with PC diffuser
- CCT selectable, 4000K, 5000K, 6500K
- Middle and side cable entry
- IP65 rated

CERTIFICATIONS



PRODUCT INFORMATION



TECHNICAL SPECIFICATIONS

Product	Slimline Underverandah
Ordering Code	PLUV1550
Power (W)	60
Colour Temperature (K)	4000 / 5000 / 6500
Lumen Output (lm)	4250-5250
CRI	>80
Beam Angle	120°
Dimming	Non Dimming
LED Type	SMD
IP Rating	IP65
IK Rating	IK08
Input Voltage	220-240V AC
Electrical Class	Class I
Power Factor	0.9
Operating Temperature	-10°~45°C
Lifetime (hr)	50,000
Installation	Surface Mount
Dimensions (mm)	1560 x 89 x 70



PANEL LIGHTS

Panel lights provide an even, bright illumination across a wide area. LED panel lights are popular in offices, commercial spaces, hospitals, and schools due to their wide range of options. Enhance your environment with our efficient and versatile panel lights, perfect for any large space requiring consistent lighting.

120 PURE Clean Room Panel Lights

121 PURE High Output Panel Light

122 PURE 4000K Panel Lights

123 PURE CCT Selectable Panel Lights

124 PURE 4000K Low Glare Panel Lights

125 PURE Panel Accessories

PURE PANEL RANGE

Clean Room LED Panel Lights

PURE PANEL RANGE

High-Output LED Panel Light



40W Clean Room Panel
592 x 592mm
PL-CR6060



40W Clean Room Panel
325 x 1230mm
PL-CR30120



60W High-Output Panel
600 x 1200mm
PL-HCT60120

FEATURES

- IP65, UGR<19 and CRI>90
- No gaps or protrusions on the face of the fitting making it easy to clean and maintain.
- Seals to the ceiling to prevent bacteria and dust accumulation
- Specification product only, many additional options available

CERTIFICATIONS



PRODUCT INFORMATION



TECHNICAL SPECIFICATIONS

Product	Clean Room Panel Light	
Ordering Code	PL-CR6060	PL-CR30120
Power (W)	40	40
Colour Temperature (K)	4000	4000
Lumen Output (lm)	4000	4000
UGR	<19	<19
CRI	>90	>90
Beam Angle	90°	90°
Dimming	Non Dimming	Non Dimming
LED Type	SMD	SMD
IP Rating	IP65	IP65
IK Rating	IK08	IK08
Input Voltage	220-240V AC	220-240V AC
Electrical Class	Class I	Class I
Power Factor	0.98	0.98
Operating Temperature	-10°~40°C	-10°~40°C
Lifetime (hr)	50,000	50,000
Installation	Recessed	Recessed
Dimensions (mm)	592 x 592 x 81	325 x 1230 x 81
Cutout (mm)	560 x 580	315 x 1195

FEATURES

- Low glare, slim back-lit panel
- CCT selectable, 4000K, 5000K, 6000K
- Standard non dimming, 0-10V and Dali drivers available
- Aluminium body with PMMA diffusers
- Includes non dimmable driver and 0.6m flex and plug

CERTIFICATIONS



PRODUCT INFORMATION

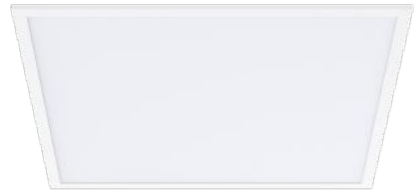


TECHNICAL SPECIFICATIONS

Product	High-Output Panel Light
Ordering Code	PL-HCT60120
Power (W)	60
Colour Temperature (K)	4000 / 5000 / 6000
Lumen Output (lm)	7000-7200
CRI	>80
Beam Angle	120°
Dimming	Non Dimming (0-10V & DALI available)
LED Type	SMD
IP Rating	IP40
IK Rating	IK03
Input Voltage	220-240V AC
Electrical Class	Class II
Power Factor	0.9
Operating Temperature	-20°~40°C
Lifetime (hr)	50,000
Installation	Recessed Mount
Dimensions (mm)	595 x 1195 x 25

PURE PANEL RANGE

LED Panel Lights



36W Panel Light
4000K - 600 x 600
NW-6060BL



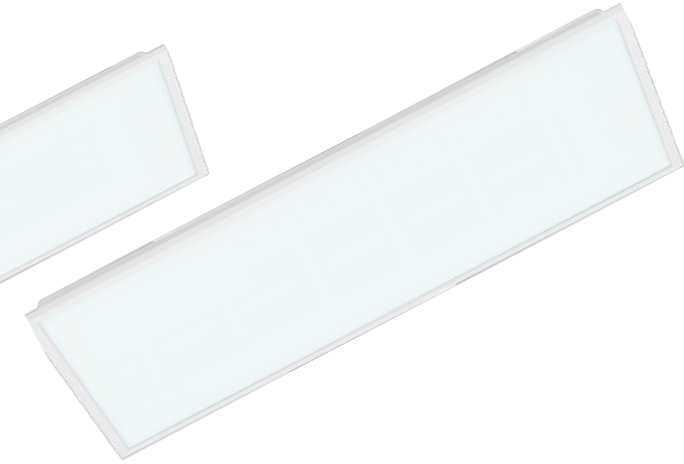
50W Panel Light
4000K - 600 x 1200
NW-60120BL



36W Panel Light
600 x 600
PL-CCT6060



36W Panel Light
300 x 1200
PL-CCT30120



50W Panel Light
600 x 1200
PL-CCT60120

PURE PANEL RANGE

CCT Selectable LED Panel Lights

FEATURES

- Low glare, slim back-lit panel
- Standard non dimming, 0-10V and Dali drivers available
- Aluminium body with PMMA diffusers
- Includes non dimmable driver and 0.6m flex and plug

CERTIFICATIONS



PRODUCT INFORMATION



TECHNICAL SPECIFICATIONS

Product	4000K Panel Light	
Ordering Code	NW-6060BL	NW-60120BL
Power (W)	36	50
Colour Temperature (K)	4000	4000
Lumen Output (lm)	3600	5000
CRI	>80	>80
Beam Angle	120°	120°
Dimming	Non Dimming (0-10V & DALI available)	Non Dimming (0-10V & DALI available)
LED Type	SMD	SMD
IP Rating	IP40	IP40
IK Rating	IK03	IK03
Input Voltage	220-240V AC	220-240V AC
Electrical Class	Class II	Class II
Power Factor	0.9	0.9
Operating Temperature	-20°~40°C	-20°~40°C
Lifetime (hr)	50,000	50,000
Installation	Recessed	Recessed
Dimensions (mm)	595 x 595 x 25	595 x 1195 x 25

FEATURES

- Low glare, slim back-lit panel
- CCT selectable, 4000K, 5000K, 6000K
- Standard non dimming, 0-10V and Dali drivers available
- Aluminium body with PMMA diffusers
- Includes non dimmable driver and 0.6m flex and plug

CERTIFICATIONS



PRODUCT INFORMATION



TECHNICAL SPECIFICATIONS

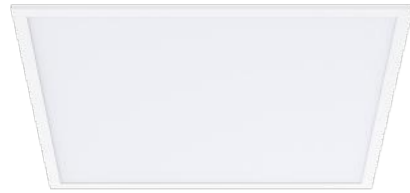
Product	CCT Selectable Panel Light		
Ordering Code	PL-CCT6060	PL-CCT30120	PL-CCT60120
Power (W)	36	36	50
Colour Temperature (K)	4000 / 5000 / 6000	4000 / 5000 / 6000	4000 / 5000 / 6000
Lumen Output (lm)	3200-3600	3200-3600	5100-5400
CRI	>80	>80	>80
Beam Angle	120°	120°	120°
Dimming	Non Dimming (0-10V & DALI available)	Non Dimming (0-10V & DALI available)	Non Dimming (0-10V & DALI available)
LED Type	SMD	SMD	SMD
IP Rating	IP40	IP40	IP40
IK Rating	IK03	IK03	IK03
Input Voltage	220-240V AC	220-240V AC	220-240V AC
Electrical Class	Class II	Class II	Class II
Power Factor	0.9	0.9	0.9
Operating Temperature	-20°~40°C	-20°~40°C	-20°~40°C
Lifetime (hr)	50,000	50,000	50,000
Installation	Recessed	Recessed	Recessed
Dimensions (mm)	595 x 595 x 25	295 x 1195 x 25	595 x 1195 x 25

PURE PANEL RANGE

Low Glare LED Panel Lights

PURE PANEL RANGE

Accessories



36W Panel Light
4000K - 600 x 600
NW-6060UGR



50W Panel Light
4000K - 600 x 1200
NW-60120UGR

FEATURES

- Low glare UGR<19
- Excellent colour rendering CRI>90, R_s>50
- Slim back-lit panel
- Standard non dimming, 0-10V and Dali drivers available
- Aluminium body with prismatic diffusers
- Includes non dimmable driver and 0.6m flex and plug

CERTIFICATIONS



PRODUCT INFORMATION



TECHNICAL SPECIFICATIONS

Product	Low Glare 4000K Panel Light	
Ordering Code	NW-6060UGR	NW-60120UGR
Power (W)	36	50
Colour Temperature (K)	4000	4000
Lumen Output (lm)	3360	4700
UGR	<19	<19
CRI	>90, R _s >50	>90, R _s >50
Beam Angle	90°	90°
Dimming	Non Dimming (0-10V & DALI available)	Non Dimming (0-10V & DALI available)
LED Type	SMD	SMD
IP Rating	IP40	IP40
IK Rating	IK03	IK03
Input Voltage	220-240V AC	220-240V AC
Electrical Class	Class II	Class II
Power Factor	0.9	0.9
Operating Temperature	-20°~40°C	-20°~40°C
Lifetime (hr)	50,000	50,000
Installation	Recessed	Recessed
Dimensions (mm)	595 x 595 x 25	595 x 1195 x 25



Suspension Kit / Seismic Restraint
PLHK6060 - 4pc for 600 x 600 or 300 x 1200 panel
PLHK60120 - 6pc for 600 x 1200 panel



Recessed Clips
PLRC6060 - 4pc for 600 x 600 or 300 x 1200 panel
PLRC60120 - 6pc for 600 x 1200 panel



70mm Deep Surface Mount Bracket
PLBR6060 - for 600 x 600 panel
PLBR30120 - for 300 x 1200 panel
PLBR60120 - for 600 x 1200 panel



0-10V Dimmable Driver
PLD6060V - for 600 x 600 or 300 x 1200 panel
PLD60120V - for 600 x 1200 panel



DALI Dimmable Driver
PLD6060DALI - for 600 x 600 or 300 x 1200 panel
PLD60120DALI - for 600 x 1200 panel



FLOODLIGHTS

LED floodlights are an excellent outdoor lighting option due to their energy efficiency, long lifespan, durability, and versatility. They provide bright and uniform light, making them ideal for illuminating large outdoor spaces while reducing energy costs. We offer a variety of fittings to meet your specific outdoor lighting requirements.

128 PURE Residential Floodlights

132 PURE Eco Floodlights

134 PURE Slimline Floodlights

136 PURE Platinum Floodlights

PURE FLOODLIGHT RANGE

Residential CCT Selectable LED Floodlights



10W Residential Floodlight
White
PLRFL10W



10W Residential Floodlight
Black
PLRFL10B



30W Residential Floodlight
White
PLRFL30W



30W Residential Floodlight
Black
PLRFL30B

FEATURES

- Compact, ideal for residential use
- Optional sensor available
- CCT selectable, 3000K, 4000K, 5700K
- Flex and plug

Residential Flood Sensor
PLRFLSW - White
PLRFLSB - Black



TECHNICAL SPECIFICATIONS

Product	Residential Floodlight	
Ordering Code	PLRFL10W	PLRFL10B
Power (W)	10	10
Colour Temperature (K)	3000 / 4000 / 5700	3000 / 4000 / 5700
Lumen Output (lm)	850-1050	850-1050
CRI	>80	>80
Beam Angle	120°	120°
Dimming	Non Dimming	Non Dimming
LED Type	SMD	SMD
IP Rating	IP65	IP65
IK Rating	IK06	IK06
Input Voltage	220-240V AC	220-240V AC
Electrical Class	Class I	Class I
Power Factor	0.9	0.9
Operating Temperature	-20°~45°C	-20°~45°C
Lifetime (hr)	50,000	50,000
Installation	Surface Mount	Surface Mount
Dimensions (mm)	104 x 30 x 77	104 x 30 x 77
Fitting Colour	White	Black

CERTIFICATIONS



PRODUCT INFORMATION



FEATURES

- Compact, ideal for residential use
- Optional sensor available
- CCT selectable, 3000K, 4000K, 5700K
- Flex and plug

Residential Flood Sensor
PLRFLSW - White
PLRFLSB - Black



TECHNICAL SPECIFICATIONS

Product	Residential Floodlight	
Ordering Code	PLRFL30W	PLRFL30B
Power (W)	30	30
Colour Temperature (K)	3000 / 4000 / 5700	3000 / 4000 / 5700
Lumen Output (lm)	3100-3550	3100-3550
CRI	>80	>80
Beam Angle	120°	120°
Dimming	Non Dimming	Non Dimming
LED Type	SMD	SMD
IP Rating	IP65	IP65
IK Rating	IK06	IK06
Input Voltage	220-240V AC	220-240V AC
Electrical Class	Class I	Class I
Power Factor	0.9	0.9
Operating Temperature	-20°~45°C	-20°~45°C
Lifetime (hr)	50,000	50,000
Installation	Surface Mount	Surface Mount
Dimensions (mm)	150 x 30 x 105	150 x 30 x 105
Fitting Colour	White	Black

CERTIFICATIONS



PRODUCT INFORMATION



PURE FLOODLIGHT RANGE

Residential CCT Selectable LED Floodlights



50W Residential Floodlight
White
PLRFL50W



50W Residential Floodlight
Black
PLRFL50B

FEATURES

- Compact, ideal for residential use
- Optional sensor available
- CCT selectable, 3000K, 4000K, 5700K
- Flex and plug



Residential Flood Sensor
PLRFLSW - White
PLRFLSB - Black

CERTIFICATIONS



PRODUCT INFORMATION



TECHNICAL SPECIFICATIONS

Product	Residential Floodlight	
Ordering Code	PLRFL50W	PLRFL50B
Power (W)	50	50
Colour Temperature (K)	3000 / 4000 / 5700	3000 / 4000 / 5700
Lumen Output (lm)	5250-5900	5250-5900
CRI	>80	>80
Beam Angle	120°	120°
Dimming	Non Dimming	Non Dimming
LED Type	SMD	SMD
IP Rating	IP65	IP65
IK Rating	IK06	IK06
Input Voltage	220-240V AC	220-240V AC
Electrical Class	Class I	Class I
Power Factor	0.9	0.9
Operating Temperature	-20°~45°C	-20°~45°C
Lifetime (hr)	50,000	50,000
Installation	Surface Mount	Surface Mount
Dimensions (mm)	190 x 30 x 135	190 x 30 x 135
Fitting Colour	White	Black





50W Eco Floodlight
PLEFL50W



100W Eco Floodlight
PLEFL100W



200W Eco Floodlight
PLEFL200W

FEATURES

- Powder coated aluminium housing with tempered glass diffuser
- Bracket mounting
- Honeycomb reflector for lower glare

CERTIFICATIONS



PRODUCT INFORMATION



TECHNICAL SPECIFICATIONS

Product	Eco Range Floodlight		
	PLEFL50W	PLEFL100W	PLEFL200W
Ordering Code	PLEFL50W	PLEFL100W	PLEFL200W
Power (W)	50W	100W	200W
Colour Temperature (K)	5000	5000	5000
Lumen Output (lm)	6250	12500	25000
CRI	>70	>70	>70
Beam Angle	90° symmetrical	90° symmetrical	90° symmetrical
Dimming	Non Dimming	Non Dimming	Non Dimming
LED Type	SMD	SMD	SMD
IP Rating	IP66	IP66	IP66
IK Rating	IK07	IK07	IK07
Input Voltage	220-240V AC	220-240V AC	220-240V AC
Electrical Class	Class I	Class I	Class I
Power Factor	0.95	0.95	0.95
Operating Temperature	-30°~+50°C	-30°~+50°C	-30°~+50°C
Lifetime (hr)	50,000	50,000	50,000
Installation	Surface Mount	Surface Mount	Surface Mount
Dimensions (mm)	250 x 231 x 44	347 x 314 x 50	446 x 413 x 55
Fitting Colour	Black	Black	Black

PURE FLOODLIGHT RANGE

Slimline Outdoor LED Floodlights



50W Slimline Floodlight
PLFL50W



100W Slimline Floodlight
PLFL100W



150W Slimline Floodlight
PLFL150W



200W Slimline Floodlight
PLFL200W

PURE SLIMLINE FLOODLIGHT RANGE

The PURE Slimline Floodlight Range combines a sleek design with high-performance illumination, making it the perfect choice for a variety of outdoor lighting applications. Available in 50W, 100W, 150W, and 200W models, this range delivers powerful, energy-efficient lighting solutions.

Each floodlight features a robust powder-coated aluminum housing paired with a tempered glass diffuser, ensuring durability and resistance to harsh environmental conditions. The streamlined design minimises water accumulation, enhancing longevity and reducing maintenance requirements.

Bracket mounting allows for flexible installation across diverse settings, while the high-lumen output ensures excellent brightness and visibility. Whether illuminating sports fields, building exteriors, or general outdoor spaces, the PURE Slimline Floodlight Range provides reliable and efficient performance.

FEATURES

- Powder coated aluminium housing with tempered glass diffuser
- Bracket mounting
- Streamline design to prevent water accumulation
- High lumen output

CERTIFICATIONS



PRODUCT INFORMATION



TECHNICAL SPECIFICATIONS

Product	Slimline Floodlights			
Ordering Code	PLFL50W	PLFL100W	PLFL150W	PLFL200W
Power (W)	50W	100W	150W	200W
Colour Temperature (K)	5700	5700	5700	5700
Lumen Output (lm)	7500	15000	22500	30000
CRI	>70	>70	>70	>70
Beam Angle	120° symmetrical	120° symmetrical	120° symmetrical	120° symmetrical
Dimming	Non Dimming	Non Dimming	Non Dimming	Non Dimming
LED Type	SMD	SMD	SMD	SMD
IP Rating	IP66	IP66	IP66	IP66
IK Rating	IK08	IK08	IK08	IK08
Input Voltage	220-240V AC	220-240V AC	220-240V AC	220-240V AC
Electrical Class	Class I	Class I	Class I	Class I
Power Factor	0.9	0.9	0.9	0.9
Operating Temperature	-30°~+40°C	-30°~+40°C	-30°~+40°C	-30°~+40°C
Lifetime (hr)	50,000	50,000	50,000	50,000
Installation	Surface Mount	Surface Mount	Surface Mount	Surface Mount
Dimensions (mm)	247 x 255 x 57	301 x 286 x 64	343 X 318 X 65	398 X 368 X 69
Fitting Colour	Black	Black	Black	Black

PURE PLATINUM RANGE

Wattage & CCT Selectable LED Floodlights



25 / 50W Selectable Floodlight
PLPFL50S



100 / 150 / 200W Selectable Floodlight
PLPFL200S



FEATURES

- Wattage and CCT selectable
- CCT selectable, 3000K, 4000K, 5000K
- Powder coated aluminium housing with tempered glass diffuser
- Streamline to prevent water accumulation
- High lumen output

CERTIFICATIONS



PRODUCT INFORMATION



TECHNICAL SPECIFICATIONS

Product	Platinum Floodlight	
Ordering Code	PLPFL50S	PLPFL200S
Power (W)	25 / 50	100 / 150 / 200
Colour Temperature (K)	3000 / 4000 / 5000	3000 / 4000 / 5000
Lumen Output (lm)	3750-8500	16000-36000
CRI	>70	>70
Beam Angle	120°	120°
Dimming	Non Dimming	Non Dimming
LED Type	SMD	SMD
IP Rating	IP66	IP66
IK Rating	IK08	IK08
Input Voltage	220-240V AC	220-240V AC
Electrical Class	Class I	Class I
Power Factor	0.9	0.9
Operating Temperature	-30°~50°C	-30°~50°C
Lifetime (hr)	50,000	50,000
Installation	Surface Mount	Surface Mount
Dimensions (mm)	268 x 246 x 54	384 x 370 x 70
Fitting Colour	Black	Black



STREET LIGHTS

Our street lights provide reliable and efficient illumination for roads, pathways, and public spaces. Designed for durability and energy efficiency, these lights ensure safety and visibility in outdoor environments. With a variety of options available, our street lights are perfect for enhancing the functionality and aesthetics of any urban or suburban area.

141 Invictus Street Light

142 PURE Eco Street Lights

144 PURE Platinum Street Lights

147 PURE Post Top Lights



INVICTUS STREET LIGHT RANGE

Urban LED Street Lights



Legacy Invictus Street Light
Urban

FEATURES

- Manufactured in Australia
- Low glare
- Range from 30W to 200W available
- Optic options
- Powder coated aluminium with PC diffusers
- Specification product only, many additional options available

CERTIFICATIONS



PRODUCT INFORMATION



TECHNICAL SPECIFICATIONS

Product	Invictus Street Light
Ordering Code	URBAN
Power (W)	30-200
Colour Temperature (K)	2700-3000
Lumen Output (lm)	140lm / W
Dimming	Non Dimming (Options available)
LED Type	Osram 3030
IP Rating	IP66
Frequency (Hz)	50 / 60
Input Voltage	220-240V AC
Dimensions (mm)	295 x 640 x 45
Weight (Kg)	12
Sail Area (m ²)	0.014
Lifetime (hr)	100,000
Warranty	10 Years



30W Street Light
PL2ESL30



40W Street Light
PL2ESL40



75W Street Light
PL2ESL75



180W Street Light
PL2ESL180

PURE ECO STREET LIGHTS

The PURE Eco Range offers a cost-effective and energy-efficient solution for modern street lighting, blending durability and innovation. Available in 20W, 40W, 75W, and 180W models, this range is ideal for a wide range of urban lighting needs.

Constructed with thermal conductive plastics and a high-performance PC optical lens, the PURE Eco Range ensures efficient heat dissipation and superior light distribution for long-lasting performance.

With an adjustable Ø60mm spigot, these lights are easy to install and integrate seamlessly into various settings. Beam angle options provide flexibility to suit specific lighting needs, ensuring optimal coverage and illumination.

The PURE Eco Range delivers a balance of efficiency and reliability, making it the perfect choice for sustainable street lighting solutions.

FEATURES

- Thermal conductive plastics with PC optical lens
- Beam angle options available
- Ø60mm spigot
- Specification product only, many additional options available

CERTIFICATIONS



PRODUCT INFORMATION



TECHNICAL SPECIFICATIONS

Product	Eco Street Lights			
Ordering Code	PL2ESL30	PL2ESL40	PL2ESL75	PL2ESL180
Power (W)	30	40	75	180
Colour Temperature (K)	4000 (3000, 5000 optional)	4000 (3000, 5000 optional)	4000 (3000, 5000 optional)	4000 (3000, 5000 optional)
Lumen Output (lm)	4500	6000	11250	27000
CRI	>70	>70	>70	>70
Beam Angle	Options available	Options available	Options available	Options available
Dimming	Non Dimming	Non Dimming	Non Dimming	Non Dimming
LED Type	LED 2835	LED 2835	LED 2835	LED 2835
IP Rating	IP66	IP66	IP66	IP66
IK Rating	IK10	IK10	IK10	IK10
Input Voltage	220-240V AC	220-240V AC	220-240V AC	220-240V AC
Power Factor	0.9	0.9	0.95	0.95
Operating Temperature	-30°~+50°C	-30°~+50°C	-30°~+50°C	-20°~+50°C
Lifetime (hr)	50,000	50,000	50,000	50,000
Dimensions (mm)	410 x 145 x 179	410 x 145 x 179	520 x 176 x 188	609 x 210 x 190
Weight (Kg)	1.9	1.9	3.2	4.4
Spigot Size (mm)	Ø60	Ø60	Ø60	Ø60
Fitting Colour	Silver	Silver	Silver	Silver



40W Street Light
PL40WFSL



60W Street Light
PL60WFSL



100W Street Light
PL100WFSL



150W Street Light
PL150WFSL

PURE PLATINUM STREET LIGHTS

The PURE Platinum Range sets the standard for high-performance, energy-efficient street lighting. Designed with precision and durability in mind, these street lights are available in four power options: 40W, 60W, 100W, and 150W, catering to a wide range of urban lighting needs.

Key features include a robust powder-coated aluminum alloy body, offering exceptional weather resistance and longevity. The lights come with the choice of a durable PC lens or glass cover, ensuring optimal light transmission and protection.

With a 15° adjustable head, these lights provide flexibility for precise beam alignment, accommodating unique installation requirements. Multiple beam angle options are available to further enhance the lighting experience, ensuring excellent illumination tailored to specific applications.

The PURE Platinum Range supports both pole-mount and side-mount entry configurations, making it versatile and easy to integrate into existing infrastructure.

Engineered for reliability and performance, these street lights are the perfect solution for enhancing safety and visibility in any environment.

FEATURES

- Powder coated aluminium alloy body with PC lens or glass cover
- 15° adjustable
- Beam angle options available
- Pole mount or side mount entry
- Specification product only, many additional options available

CERTIFICATIONS



PRODUCT INFORMATION



TECHNICAL SPECIFICATIONS

Product	Platinum Street Lights			
Ordering Code	PL40WFSL	PL60WFSL	PL100WFSL	PL150WFSL
Power (W)	40	60	100	150
Colour Temperature (K)	4000 (3000, 5000 optional)	4000 (3000, 5000 optional)	4000 (3000, 5000 optional)	4000 (3000, 5000 optional)
Lumen Output (lm)	6400	9600	16000	24000
CRI	>70	>70	>70	>70
Beam Angle	See optic options	See optic options	See optic options	See optic options
Dimming	Non Dimming	Non Dimming	Non Dimming	Non Dimming
LED Type	LED 3030	LED 3030	LED 3030	LED 3030
IP Rating	IP66	IP66	IP66	IP66
IK Rating	IK09	IK09	IK09	IK09
Input Voltage	220-240V AC	220-240V AC	220-240V AC	220-240V AC
Power Factor	0.94	0.94	0.94	0.94
Operating Temperature	-30°~+50°C	-30°~+50°C	-30°~+50°C	-30°~+50°C
Lifetime (hr)	50,000	50,000	50,000	50,000
Dimensions (mm)	580 x 236 x 128	681 x 236 x 128	681 x 236 x 128	750 x 280 x 128
Weight (Kg)	3.5	4.5	4.5	6
Spigot Size (mm)	Ø60	Ø60	Ø60	Ø60
Fitting Colour	Silver	Silver	Silver	Silver



PURE STREET LIGHT RANGE

Urban LED Post Top Lights



40W Direct Post Top Light
PLPT40D



40W Indirect Post Top Light
PLPT40IN

FEATURES

- Classic clean and robust design
- Ø60mm spigot for post top mounting
- Optic and power options available
- Powder coated aluminium with PC diffusers
- Specification product only, many additional options available

CERTIFICATIONS

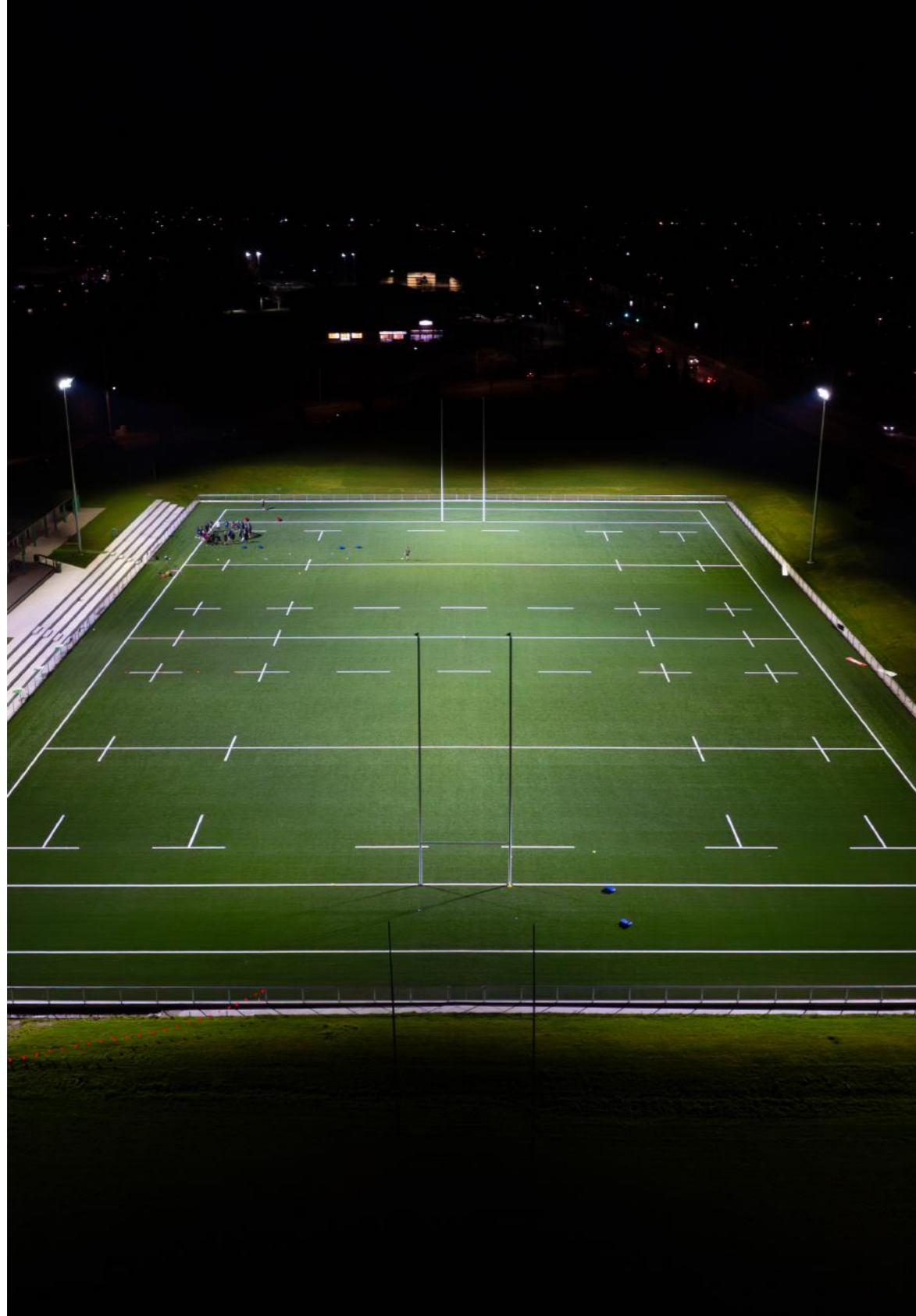


PRODUCT INFORMATION



TECHNICAL SPECIFICATIONS

Product	Urban Post Top Light	
Ordering Code	PLPT40D	PLPT40IN
Power (W)	40	40
Colour Temperature (K)	4000K	4000K
Lumen Output (lm)	5600	4200
Dimming	Non Dimming	Non Dimming
LED Type	LED 3030	LED 3030
IP Rating	IP66	IP66
IK Rating	IK10	IK10
Frequency (Hz)	50 / 60	50 / 60
Input Voltage	220-240V AC	220-240V AC
Power Factor	0.9	0.9
Operating Temp	-30°~+50°C	-30°~+50°C
Lifetime (hr)	50,000	50,000
Dimensions (mm)	Ø550 x 320	Ø550 x 320
Weight (Kg)	6.4	6.4
Spigot Size (mm)	Ø60	Ø60
Fitting Colour	Black	Black



SPORTS LIGHTS

Our sports lights deliver high-performance illumination for athletic fields, courts, and arenas. Engineered for maximum brightness and durability, these lights ensure optimal visibility and safety for players and spectators alike. With energy-efficient technology and robust construction, our sports lights are the perfect choice for enhancing any sports facility.

152 Legacy Invictus Sports Lights

154 PURE Platinum Sports Lights

156 PURE Sports Court Floodlights



SPORTS LIGHTING

EXCELLENCE IN SPORTS LIGHTING

As the leading professionals in sports lighting, our mission at PURE is to deliver comprehensive lighting packages tailored to the distinctive needs of every sports facility. We specialise in creating bespoke lighting designs that enhance the overall experience for both athletes and spectators.

Our sports lights stand out as the ultimate choice for clubs, councils, and facilities seeking unparalleled performance. Designed for a diverse range of sports - including tennis, hockey, swimming, badminton, basketball, and football - our lights offer unmatched visibility, safety, and durability. Features such as high colour rendering index (CRI) and television lighting consistency index (TLCI) ensure precise colour representation, perfect for HD filming. Additionally, our lights incorporate smart controls for energy efficiency and are thoughtfully engineered to minimise light spill, reducing environmental impact.

Embedded in our approach is a deep understanding of the lighting requirements for each sport and level of play. We meticulously analyse and incorporate the specifications of various sports, ensuring that our lighting solutions are not only technically superior but also enhance the specific visual demands of each game.

Beyond our commitment to unmatched lighting solutions, we take pride in supporting every stage of the process, from concept to handover. From the initial design phase to the final installation, PURE stands as your trusted partner in achieving the highest standards in sports lighting.

PURE: Where innovation seamlessly meets efficiency to brilliantly illuminate your sports facility.

Whether you're in search of a comprehensive lighting solution or aiming to address specific needs, **PURE LIGHTING** emerges as the optimal choice for your organisation. Our commitment to excellence ensures that we provide not only complete solutions but also fill in the gaps with tailored offerings, meeting the unique requirements of your projects.



250W Invictus II
INVICTUS250
Driver on-board



500W Invictus II
INVICTUS500
Driver on-board



1000W Invictus II
INVICTUS1000
Driver on-board



1500W Invictus II
INVICTUS1500
Remote Driver

LEGACY INVICTUS II RANGE

The Legacy Invictus II Range is a revolutionary floodlighting solution purpose-built for sports field illumination. Available in 250W, 500W, 1000W, and 1500W options, this Australian-made luminaire is backed by an impressive 10-year warranty, delivering reliability and peace of mind for years to come. Designed and manufactured in Australia, the Invictus Series combines cutting-edge technology with precision engineering to redefine sports lighting performance.

Utilising the latest advancements in LED technology, the Legacy Invictus takes a 4-dimensional approach to lighting design. It combines high CRI (color rendering index) for exceptional definition, superior efficiency with high lumens-per-watt output, tight beam control to minimize stray light, and powerful light output. The result is a luminaire that outperforms traditional lighting in every aspect, delivering unmatched definition, uniformity, and performance.

Engineered specifically for sports lighting, this light-weight, low-profile floodlight ensures vivid illumination with minimal maintenance. Its advanced in-built thermal management guarantees long-lasting durability, while its vivid white light enhances visibility for players and spectators alike. With solid-state reliability and exceptional energy efficiency, the Legacy Invictus II Range is lighting the way for future generations, helping you define the moment with clarity and brilliance.

FEATURES

- Australian made - 10 year warranty
- Lightweight & flat-mount with aluminium body
- Colour temperature, beam angle and dimming options
- Driver on board or remote options
- Glare control shields available
- Specification product only, many additional options available

CERTIFICATIONS



PRODUCT INFORMATION



TECHNICAL SPECIFICATIONS

Product	Legacy Invictus II Sports Flood Lights			
Ordering Code	INVICTUS250	INVICTUS500	INVICTUS1000	INVICTUS1500
Power (W)	250	500	1000	1500
Colour Temperature (K)	5000 (4000 optional)	5000 (4000 optional)	5000 (4000 optional)	5000 (4000 optional)
Lumen Output (lm)	35000	70000	140000	210000
CRI	>70	>70	>70	>70
Beam Angle	Optional optics	Optional optics	Optional optics	Optional optics
Dimming	1-10V, DMX & DALI options	1-10V, DMX & DALI options	1-10V, DMX & DALI options	1-10V, DMX & DALI options
LED Type	LED 3030	LED 3030	LED 3030	LED 3030
IP Rating	IP66	IP66	IP66	IP66
IK Rating	IK08	IK08	IK08	IK08
Input Voltage	220-240V AC	220-240V AC	220-240V AC	220-240V AC
Power Factor	0.9	0.9	0.9	0.9
Operating Temperature	-40°~+50°C	-40°~+50°C	-40°~+50°C	-40°~+50°C
Lifetime (hr)	100,000	100,000	100,000	100,000
Weight (Kg)	22	22	32	26 (ex. driver)
Dimensions (mm)	839 x 396 x 195	839 x 396 x 195	839 x 396 x 195	1175 x 396 x 195
Sail Area (m² @ 40°)	0.25	0.25	0.25	0.32
Fitting Colour	Black	Black	Black	Black



600W Sports Floodlight
PLSFL600



1200W Sports Floodlight
PLSFL1200



1800W Sports Floodlight
PLSFL1800

FEATURES

- Powder coated aluminium alloy with PC optical lenses
- Multiple optic options to minimise spill and control glare
- Glare shields available to help minimise unwanted spill and glare
- Driver on board option
- High lumen output

CERTIFICATIONS



PRODUCT INFORMATION



TECHNICAL SPECIFICATIONS

Product	Platinum Range Sports Floodlights		
Ordering Code	PLSFL600	PLSFL1200	PLSFL1800
Power (W)	600	1200	1800
Colour Temperature (K)	5700 (3000, 4000 optional)	5700 (3000, 4000 optional)	5700 (3000, 4000 optional)
Lumen Output (lm)	145lm/W & 160lm/W	145lm/W & 160lm/W	145lm/W & 160lm/W
CRI	>70	>70	>70
Beam Angle	Optional optics	Optional optics	Optional optics
Dimming	DALI & DMX options	DALI & DMX options	DALI & DMX options
LED Type	LED 3737 / LED 5050	LED 3737 / LED 5050	LED 3737 / LED 5050
IP Rating	IP66	IP66	IP66
IK Rating	IK08	IK08	IK08
Input Voltage	220-240V AC	220-240V AC	220-240V AC
Power Factor	0.92	0.92	0.92
Operating Temperature	-30°~+45°C	-30°~+45°C	-30°~+45°C
Lifetime (hr)	50,000	50,000	50,000
Weight (Kg)	8.8	21	36.7
Dimensions (mm)	594 x 341 x 192	645 x 669 x 313	709 x 1047 x 386
Sail Area (m ²)	0.1m ² at 15°	0.18m ² at 15°	0.26m ² at 15°
Fitting Colour	Black	Black	Black

PURE SPORTS RANGE

Sports Court Floodlights



450W Sports Court Flood
PLSCF450



600W Sports Court Flood
PLSCF600

FEATURES

- Powder coated aluminium alloy with PC optical lenses
- Multiple optic options to minimise spill and control glare
- Adjustable U-bracket for easy installation
- High lumen output
- Specification product only, many additional options available

CERTIFICATIONS

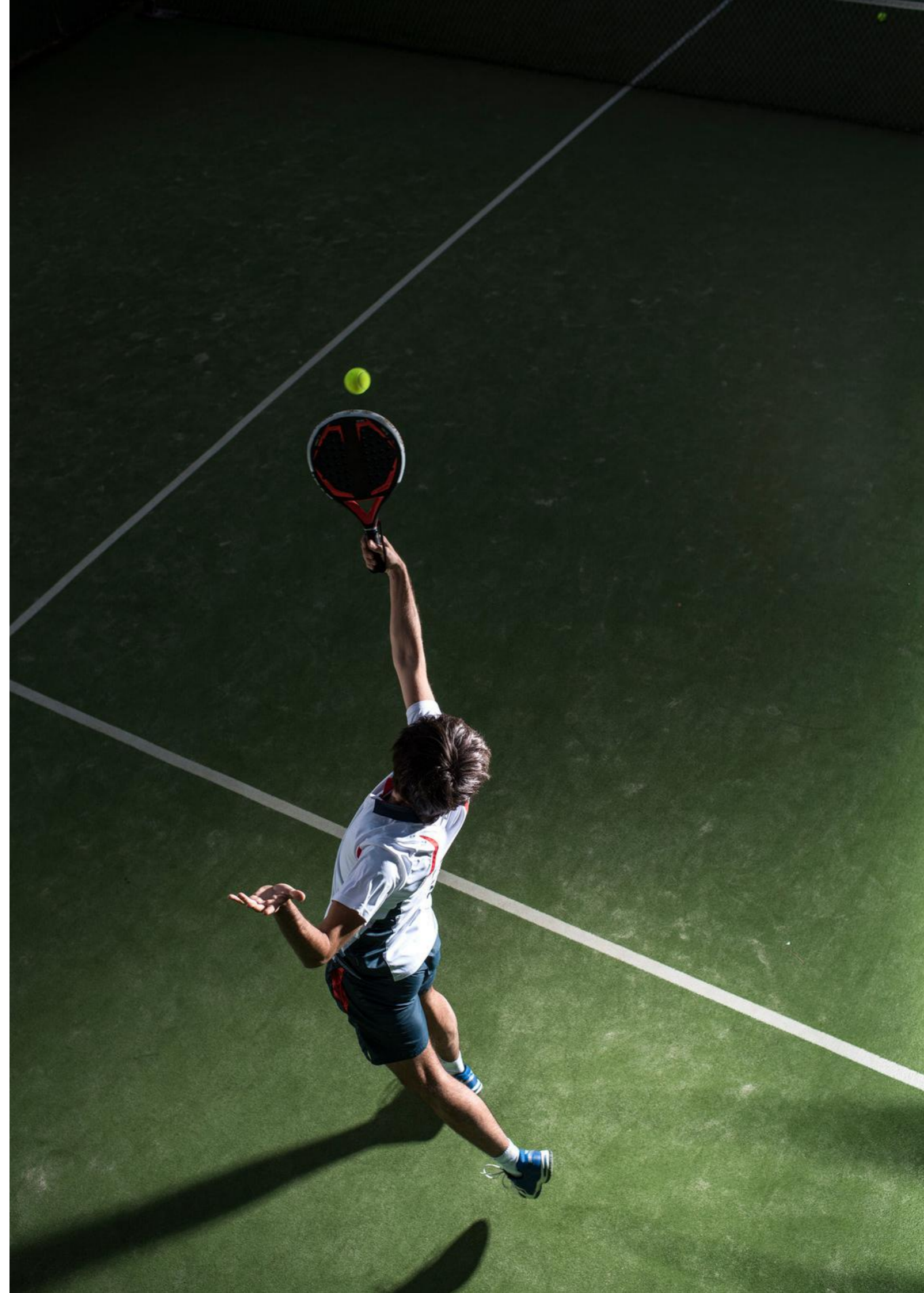


PRODUCT INFORMATION



TECHNICAL SPECIFICATIONS

Product	Sports Court Floods	
Ordering Code	PLSCF450	PLSCF600
Power (W)	450	600
Colour Temperature (K)	5000 (3000, 4000 optional)	5000K (3000, 4000 optional)
Lumen Output (lm)	67500	90000
CRI	>70	>70
Beam Angle	Optional optics	Optional optics
Dimming	Non Dimmable	Non Dimmable
LED Type	LED 5050	LED 5050
IP Rating	IP66	IP66
IK Rating	IK10	IK10
Input Voltage	220-240V AC	220-240V AC
Electrical Class	Class I	Class I
Power Factor	0.95	0.95
Operating Temperature	-30°~+50°C	-30°~+50°C
Lifetime (hr)	50,000	50,000
Dimensions (mm)	656 x 635 x 82	656 x 635 x 82
Sail Area (m ²)	0.33	0.33
Fitting Colour	Black	Black





LIGHT POLES

Pure manufacture light poles suitable for a wide range of applications, including sports lighting, street lighting, urban developments, and car parks. Our light poles are designed for durability and reliability, ensuring they meet the demands of any environment. Enhance your outdoor spaces with our versatile and high-quality light poles.

162 PURE Light Poles

LIGHTING POLES

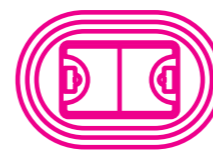
Pure Lighting is a leader in innovative lighting pole solutions, offering a versatile range designed for various applications, including street lighting, flood lighting, car park lighting, and sports lighting. Each pole is meticulously tailored to meet the unique demands of its application, ensuring optimal performance, durability, and aesthetic appeal.

We provide an array of foundation options and cross-arm configurations to suit diverse project requirements. Our team specialises in foundation design, including PS1 (Producer Statement) preparation, delivering structural engineering excellence.

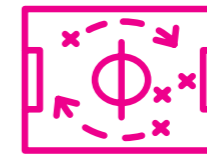
Central to our process is open and effective communication. We work closely with our clients, collaborating at every stage - from concept and design to delivery and installation. Our seamless project management ensures that your vision becomes a reality, with a commitment to quality and a focus on delivering exceptional results.

With Pure Lighting, you can trust in a partner dedicated to providing innovative, high-quality, and purpose-driven lighting pole solutions for modern needs.

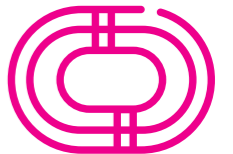
POLE APPLICATIONS



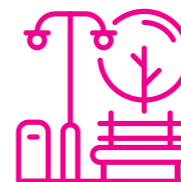
Stadiums & Arenas



Sports Fields & Courts



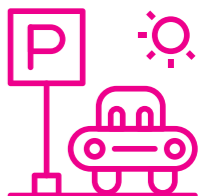
Racecourses



Parks & City Centres



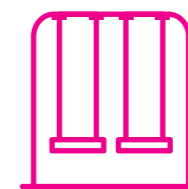
Airports



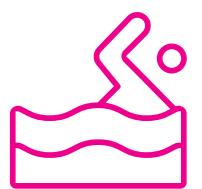
Parking Lots



Container Yards



Playgrounds

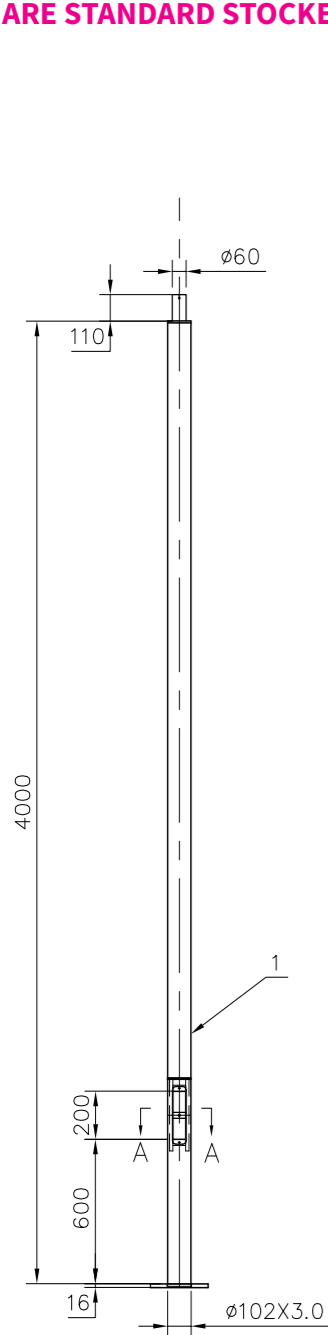


Aquatic Centres & Velodromes

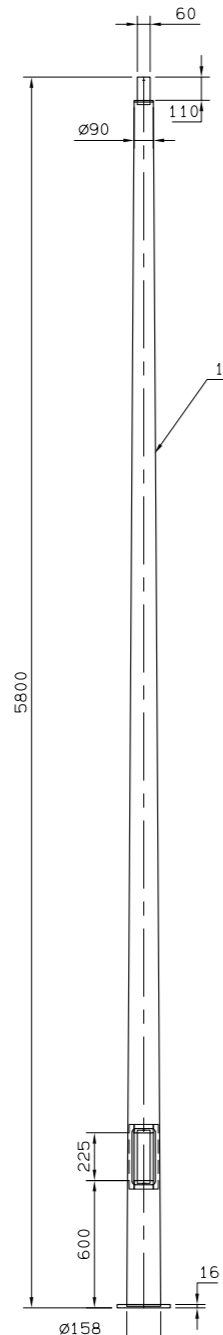
FEATURES

- Galvanised and powder coated options available
- Two foundation options along with direct buried poles
- Crossarms available from 300-3000mm
- We can supply poles for any project

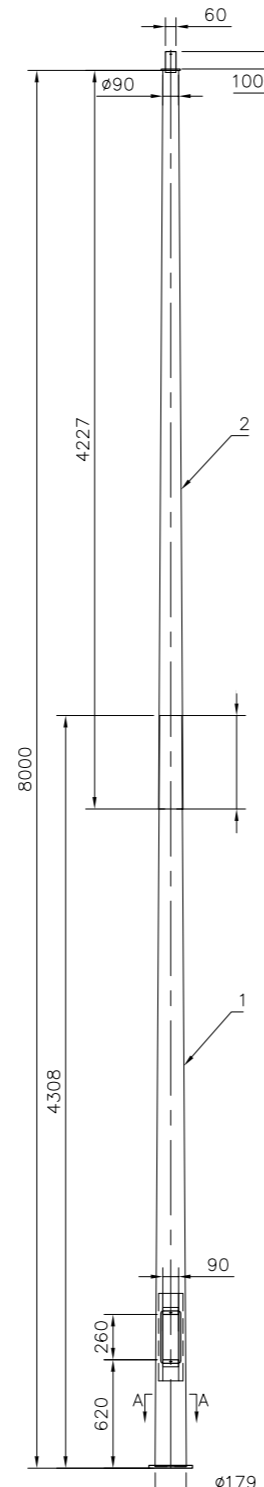
ALL POLES AND ACCESSORIES DISPLAYED ARE STANDARD STOCKED ITEMS.



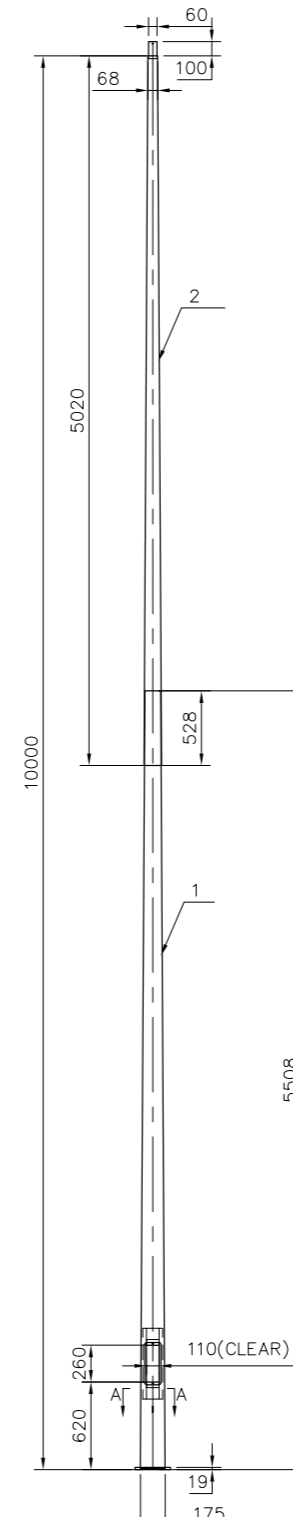
4m Light Pole
WP-Q100-4-S1



6m Light Pole
WP-X58-S1

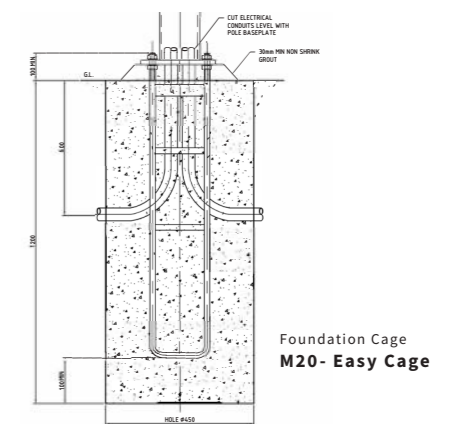
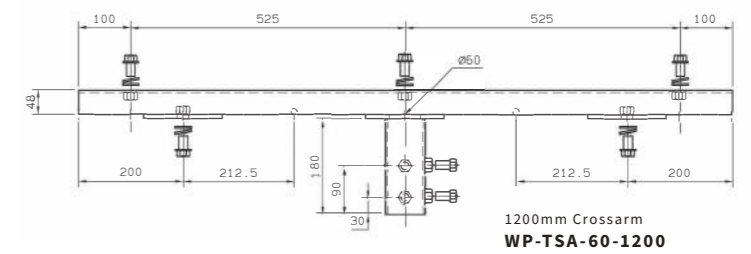
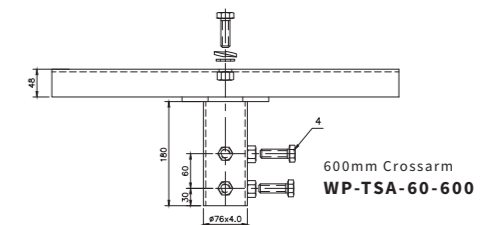
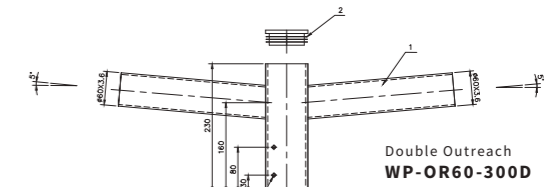
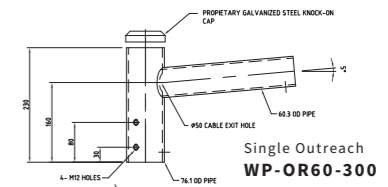


8m Light Pole
WP-X8-S1-2SEC



10m Light Pole
WP-X10-S1

ACCESSORIES





HIGH BAY LIGHTS / CANOPY LIGHTS

High bay lights are powerful fixtures specifically designed to provide bright, uniform illumination in indoor spaces with high ceilings, such as warehouses, commercial spaces, and sports facilities. They offer a broad spread of light, making them ideal for illuminating large areas with high-quality light.

166 PURE Eco High Bay

167 PURE Eco Selectable High Bay

168 PURE Platinum CCT Selectable High Bay

169 PURE Eco Linear High Bay

170 PURE Linear High Bay

171 PURE Platinum Linear High Bay

173 PURE Canopy Light

PURE ECO RANGE
UFO LED High Bay Light



200W Eco High Bay Light
PLEHB200W

ACCESSORIES



FEATURES

- Powder coated aluminium body with PC lens
- Loop hanging
- High lumen output

CERTIFICATIONS



PRODUCT INFORMATION



TECHNICAL SPECIFICATIONS

Product	Eco UFO High Bay
Ordering Code	PLEHB200W
Power (W)	200
Colour Temperature (K)	5000
Lumen Output (lm)	29000
CRI	>80
Beam Angle	120°
Dimming	Non Dimming
LED Type	LED 2835
IP Rating	IP65
IK Rating	IK08
Input Voltage	220-240V AC
Electrical Class	Class I
Power Factor	0.92
Operating Temperature	-30°~+45°C
Lifetime (hr)	50,000
Installation	Loop Hanging
Dimensions (mm)	Ø270 x 159
Fitting Colour	Black

PURE ECO RANGE
CCT & Power Selectable LED High Bay Light



Power and CCT Switchable High Bay
PLESHB200

ACCESSORIES



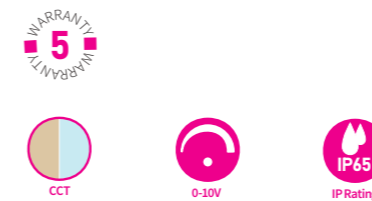
FEATURES

- CCT and power selectable
- Loop hanging
- 0-10V dimmable

CERTIFICATIONS



PRODUCT INFORMATION



TECHNICAL SPECIFICATIONS

Product	Eco Switchable High Bay
Ordering Code	PLESHB200
Power (W)	120 / 160 / 200
Colour Temperature (K)	4000 / 5000
Lumen Output (lm)	19800 / 26400 / 33000
CRI	>70
Beam Angle	115°
Dimming	0-10V Dimming
LED Type	LED 2835
IP Rating	IP65
IK Rating	IK08
Input Voltage	220-240V AC
Electrical Class	Class I
Power Factor	0.92
Operating Temperature	-30°~+50°C
Lifetime (hr)	50,000
Installation	Loop Hanging
Dimensions (mm)	Ø330 x 176
Fitting Colour	Black

PURE PLATINUM RANGE

CCT & Power Selectable LED High Bay Light



Power and CCT Switchable High Bay
PL-SHB-120-200W

PURE ECO RANGE

Linear LED High Bay Light



200W Eco Linear High Bay
PLELHB200

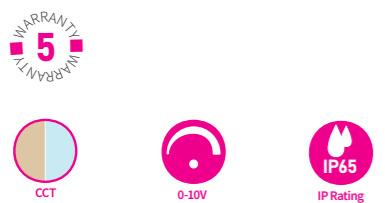
FEATURES

- CCT and power selectable
- Loop hanging or ceiling mount
- 0-10V dimmable
- Powder coated aluminium body with PC diffuser
- Emergency driver available - see emergency section

CERTIFICATIONS



PRODUCT INFORMATION



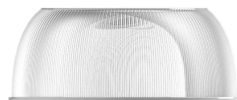
ACCESSORIES



PIR sensor
PLHBPiR



Safety Chain
PLHBSC



PC Reflector
PLSHBD



Aluminium Reflector
PLSHBDA



Ceiling Mount
PLSHBR

TECHNICAL SPECIFICATIONS

Product	Platinum Switchable High Bay
Ordering Code	PL-SHB-120-200W
Power (W)	100 / 120 / 150 / 200
Colour Temperature (K)	4000 / 5000
Lumen Output (lm)	160lm/W / 150lm/W
CRI	>70
Beam Angle	120°
Dimming	0-10V Dimming
LED Type	LED 2835
IP Rating	IP65
IK Rating	IK08
Input Voltage	220-240V AC
Electrical Class	Class I
Power Factor	0.95
Operating Temperature	-30°~+50°C
Lifetime (hr)	50,000
Installation	Loop Hanging / Ceiling Mount
Dimensions (mm)	Ø364 x 172
Fitting Colour	Black

FEATURES

- High lumen output
- Slim compact and light weight
- Aluminium body with PC diffuser
- Includes suspension

CERTIFICATIONS



PRODUCT INFORMATION



TECHNICAL SPECIFICATIONS

Product	Eco Linear High Bay
Ordering Code	PLELHB200
Power (W)	200
Colour Temperature (K)	5000
Lumen Output (lm)	28000
CRI	>70
Beam Angle	30° X 80°
Dimming	Non Dimming
LED Type	LED 2835
IP Rating	IP65
IK Rating	IK08
Input Voltage	220-240V AC
Electrical Class	Class I
Power Factor	0.75
Operating Temperature	-30°~+50°C
Lifetime (hr)	50,000
Installation	Suspended
Dimensions (mm)	1153 x 154 x 61
Fitting Colour	Black

PURE HIGH BAY RANGE

Linear LED High Bay Light

PURE PLATINUM RANGE

Linear LED High Bay Light



200W Linear High Bay
CW-HBZ-200W



200W Platinum Linear High Bay
PLPHB200

FEATURES

- Aluminium body with PC diffuser
- Suspension included
- High lumen output

TECHNICAL SPECIFICATIONS

Product	Linear High Bay
Ordering Code	CW-HBZ-200W
Power (W)	200
Colour Temperature (K)	6000
Lumen Output (lm)	21000
CRI	>80
Beam Angle	120°
Dimming	Non Dimming
LED Type	LED 2835
IP Rating	IP40
IK Rating	IK08
Input Voltage	220-240V AC
Electrical Class	Class I
Power Factor	0.95
Operating Temperature	-20°~+40°C
Lifetime (hr)	50,000
Installation	Suspended
Dimensions (mm)	1195 x 250 x 84
Fitting Colour	White

CERTIFICATIONS



PRODUCT INFORMATION



FEATURES

- Powder coated aluminium body with PC diffuser
- Low glare
- Suspended or ceiling mount
- standard non dimming, dimming and smart control options available

ACCESSORIES



CERTIFICATIONS



PRODUCT INFORMATION



TECHNICAL SPECIFICATIONS

Product	Platinum High Bay
Ordering Code	PLPHB200
Power (W)	200
Colour Temperature (K)	5000
Lumen Output (lm)	32000
CRI	>70
Beam Angle	120°
Dimming	Non Dimming
LED Type	LED 3030
IP Rating	IP66
IK Rating	IK10
Input Voltage	220-240V AC
Electrical Class	Class I
Power Factor	0.91
Operating Temperature	-30°~+50°C
Lifetime (hr)	50,000
Installation	Suspended / Ceiling Mount
Dimensions (mm)	732 x 365 x 64
Fitting Colour	White



120W Canopy Light
PLCL120W

FEATURES

- Powder coated aluminium body with tempered glass lens
- Surface mount
- High lumen output
- Ideal for petrol stations

CERTIFICATIONS



PRODUCT INFORMATION



TECHNICAL SPECIFICATIONS

Product	Canopy Light
Ordering Code	PLCL120W
Power (W)	120
Colour Temperature (K)	4000
Lumen Output (lm)	18000
CRI	>70
Beam Angle	90°
Dimming	Non Dimming
LED Type	LED 2835
IP Rating	IP65
IK Rating	IK08
Input Voltage	220-240V AC
Electrical Class	Class I
Power Factor	0.9
Operating Temperature	-30°~+50°C
Lifetime (hr)	50,000
Installation	Surface Mount
Dimensions (mm)	368 x 369 x 65
Fitting Colour	White



EMERGENCY LIGHTS

Emergency lighting is crucial for the safety of occupants during emergencies such as fires, power outages, or other unforeseen events. We offer a range of both exit lights and emergency lights that meet AS/NZS safety regulations. Ensure the safety and security of your space with our reliable and compliant emergency lighting solutions.

- 176 PURE Exit Lights
- 177 PURE Jumbo Exit Light
- 178 PURE IP Rated Exit Light
- 179 PURE Emergency Lights
- 180 PURE IP Rated Emergency Lights
- 181 PURE Emergency Spot Light
- 182 PURE Emergency Batten Light
- 183 PURE Emergency Oyster Light
- 184 PURE Emergency High Bay Driver
- 185 PURE Emergency Panel Driver

PURE EMERGENCY RANGE

LED Exit Lights



Surface Mount Exit Light
PLEX1W



Surface Mount Blade Exit Light
PLEX2W



Jumbo Exit Light
PLEX4JW

FEATURES

- AS/NZS compliant
- Long-life LiFePO4 battery
- 24M classification >2 hour discharge
- Double sided
- Maintained
- Signage included



CERTIFICATIONS



PRODUCT INFORMATION



TECHNICAL SPECIFICATIONS

Product	Exit Lights	
Ordering Code	PLEX1W	PLEX2W
Power (W)	1W	1W
Fitting Colour	White	White
Charge	16 Hours	16 Hours
Discharge	>2 Hours	>2 Hours
Classification	24M	24M
Battery	LiFePO4 3.2V600mAh	LiFePO4 3.2V600mAh
IP Rating	IP20	IP20
IK Rating	IK06	IK06
Input Voltage	220-240V AC	220-240V AC
Electrical Class	Class II	Class II
Power Factor	0.3	0.3
Operating Temperature	0°~+45°C	0°~+45°C
Test Mode	Manual	Manual
Dimming	Non Dimming	Non Dimming
LED Type	SMD	SMD
Dimensions (mm)	357 x 210 x 60	357 x 208 x 61

FEATURES

- AS/NZS compliant
- Long-life LiFePO4 battery
- 48M classification >2 hour discharge
- Single sided
- Maintained
- Signage included



CERTIFICATIONS



PRODUCT INFORMATION



PURE EMERGENCY RANGE

Jumbo LED Exit Light

TECHNICAL SPECIFICATIONS

Product	Jumbo Exit Light
Ordering Code	PLEX4JW
Power (W)	5W
Fitting Colour	White
Charge	16 Hours
Discharge	>2 Hours
Classification	48M
Battery	LiFePO4 6.4V3200mAh
IP Rating	IP20
IK Rating	IK06
Input Voltage	220-240V AC
Electrical Class	Class I
Power Factor	0.9
Operating Temperature	0°~+45°C
Test Mode	Manual
Dimming	Non Dimming
LED Type	SMD
Dimensions (mm)	620 x 317 x 75

PURE EMERGENCY RANGE

IP65 LED Exit Light



IP65 Exit Light
PLEX3WIP

PURE EMERGENCY RANGE

LED Emergency Lights



Recessed Emergency Light
PLEM3W



Surface Emergency Light
PLEM2W

FEATURES

- AS/NZS compliant
- Long-life LiFePO4 battery
- IP65, 24M classification >2 hour discharge
- Double sided
- Maintained
- Signage included



CERTIFICATIONS



PRODUCT INFORMATION



TECHNICAL SPECIFICATIONS

Product	IP65 Exit Light
Ordering Code	PLEX3WIP
Power (W)	2W
Fitting Colour	White
Charge	16 Hours
Discharge	>2 Hours
Classification	24M
Battery	LiFePO4 6.4V1500mAh
IP Rating	IP65
IK Rating	IK06
Input Voltage	220-240V AC
Electrical Class	Class II
Power Factor	0.9
Operating Temperature	0°~+45°C
Test Mode	Manual
Dimming	Non Dimming
LED Type	SMD
Dimensions (mm)	321 x 194 x 108

FEATURES

- AS/NZS compliant
- Long-life LiFePO4 battery
- D63 classification >2 hour discharge
- Non-maintained
- Recessed fitting IC-F

CERTIFICATIONS



PRODUCT INFORMATION



TECHNICAL SPECIFICATIONS

Product	Emergency Light	
Ordering Code	PLEM3W	PLEM2W
Power (W)	3W	3W
Fitting Colour	White	White
Charge	16 Hours	16 Hours
Discharge	>2 Hours	>2 Hours
Classification	D63	D63
Battery	LiFePO4 6.4V1500mAh	LiFePO4 6.4V1500mAh
IP Rating	IP20	IP20
IK Rating	IK06	IK06
Input Voltage	220-240V AC	220-240V AC
Electrical Class	Class II	Class II
Power Factor	0.3	0.3
Operating Temperature	0°~+45°C	0°~+45°C
Test Mode	Manual	Manual
Dimming	Non Dimming	Non Dimming
Mounting	Recessed	Surface
LED Type	SMD	SMD
Dimensions (mm)	Ø140 x 30mm	215 x 215 x 53

PURE EMERGENCY RANGE

IP65 LED Emergency Lights



Recessed IP65 Emergency Light
PLEM4WIP



Surface IP65 Emergency Light
PLEM5WIP

FEATURES

- AS/NZS compliant
- Long-life LiFePO4 battery
- D63 classification >2 hour discharge
- Non-maintained
- IP65 rated
- Recessed fitting IC-F

CERTIFICATIONS



PRODUCT INFORMATION

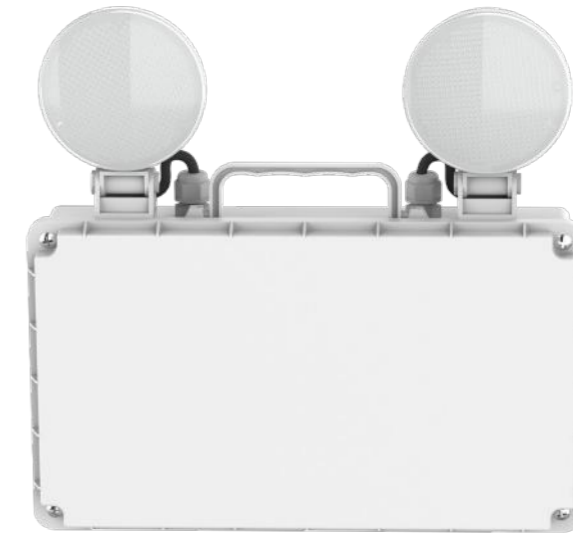


TECHNICAL SPECIFICATIONS

Product	IP65 Emergency Lights	
Ordering Code	PLEM4WIP	PLEM5WIP
Power (W)	6W	6W
Fitting Colour	White	White
Charge	16 Hours	16 Hours
Discharge	>2 Hours	>2 Hours
Classification	D63	D63
Battery	LiFePO4 6.4V1500mAh	LiFePO4 6.4V1500mAh
IP Rating	IP65	IP65
IK Rating	IK06	IK06
Input Voltage	220-240V AC	220-240V AC
Electrical Class	Class II	Class II
Power Factor	0.3	0.3
Operating Temperature	0°~+45°C	0°~+45°C
Test Mode	Manual	Manual
Dimming	Non Dimming	Non Dimming
Mounting	Recessed	Surface
LED Type	SMD	SMD
Dimensions (mm)	Ø80 x 35mm	Ø175 x 78

PURE EMERGENCY RANGE

Twin LED Emergency Spot Light



Twin IP65 Emergency Spot Light
PLEMF5W

FEATURES

- AS/NZS compliant
- Long-life LiFePO4 battery
- D160 classification >3 hour discharge
- Non-maintained

CERTIFICATIONS



PRODUCT INFORMATION



TECHNICAL SPECIFICATIONS

Product	Twin IP65 Emergency Spot Light
Ordering Code	PLEMF5W
Power (W)	9W
Fitting Colour	White
Charge	24 Hours
Discharge	>3 Hours
Classification	D160
Battery	LiFePO4 6.4V6000mAh
IP Rating	IP65
IK Rating	IK06
Input Voltage	220-240V AC
Electrical Class	Class II
Power Factor	0.9
Operating Temperature	0°~+45°C
Test Mode	Manual
Dimming	Non Dimming
LED Type	SMD
Dimensions (mm)	267 x 260 x 62

PURE EMERGENCY RANGE

CCT Selectable LED Batten Light



50W Emergency Batten
1500mm
PL-U150-50WEM



FEATURES

- Low profile slim batten light
- Metal housing with PC diffuser
- 4 fast release buttons for easy installation
- CCT selectable, 4000K, 6000K
- 24hr charge / >3 hour discharge
- Emergency output 3W
- Emergency lumen output 330lm

CERTIFICATIONS



PRODUCT INFORMATION



TECHNICAL SPECIFICATIONS

Product	Emergency Batten
Ordering Code	PL-U150-50WEM
Power (W)	50 / 3 (emergency)
Colour Temperature (K)	4000 / 6000
Lumen Output (lm)	4800-6000 / 330 (emergency)
CRI	>80
Beam Angle	120°
Dimming	Non Dimming
LED Type	SMD
IP Rating	IP20
IK Rating	IK08
Input Voltage	220-240V AC
Electrical Class	Class I
Power Factor	0.9
Operating Temperature	-20°~45°C
Lifetime (hr)	50,000
Installation	Surface Mount
Dimensions (mm)	1500 x 71 x 64

PURE EMERGENCY RANGE

CCT Selectable LED Oyster Light



18W Emergency Oyster Light
PLCL18WEM

FEATURES

- Light weight and easy to install
- PC body with PC opal diffuser
- CCT selectable 3000K, 4000K, 5700K
- Flicker free, triac dimmable driver
- Surface mounted
- 24hr charge / >3 hour discharge
- Emergency output 3W
- Emergency lumen output 330lm

CERTIFICATIONS



PRODUCT INFORMATION



TECHNICAL SPECIFICATIONS

Product	Emergency Oyster
Ordering Code	PLCL18WEM
Power (W)	18 / 3 (emergency)
Colour Temperature (K)	3000 / 4000 / 5700
Lumen Output (lm)	1710-1910 / 330 (emergency)
CRI	>80
Beam Angle	120°
Dimming	Triac Dimming
LED Type	SMD
IP Rating	IP54
IK Rating	IK10
Input Voltage	220-240V AC
Electrical Class	Class II
Power Factor	0.9
Operating Temperature	-20°~45°C
Lifetime (hr)	50,000
Installation	Surface Mount
Dimensions (mm)	Ø300 x 40

PURE EMERGENCY RANGE
LED High Bay Emergency Driver Kit



Emergency Driver for PL-SHB-120-200W
PLSHBED

PURE EMERGENCY RANGE
LED Panel Light Emergency Driver Kit



Emergency Driver for Panel Light
PLDEM

FEATURES

- When switched to emergency operation power is cut to 10% of normal output
- Can be used with 0-10V dimmable high bay
- High output power
- Self-testing
- Battery over-temperature protection

TECHNICAL SPECIFICATIONS

Product	Emergency Driver
Ordering Code	PLSHBED
Power (W)	10% of normal output
IP Rating	IP65
IK Rating	IK08
Input Voltage	220-240V
Operating Temperature	0°~+45°C
Installation	Recessed
Dimensions (mm)	427 x 133 x 75mm
Weight (kg)	2.5
Charge	24 hours
Discharge	>3 hours
Mounting	Loop mounting
Material	Powder coated aluminium body
Battery	LiFeP04

CERTIFICATIONS



PRODUCT INFORMATION



FEATURES

- Smart IC control
- Suitable for Pure Panel Range but can be used with any fittings with external drivers 10-60V DC output
- Manual test
- Battery over-temperature protection

TECHNICAL SPECIFICATIONS

Product	Emergency Driver
Ordering Code	PLDEM
Power (W)	4W Max
IP Rating	IP20
Input Voltage	220-240V
Operating Temperature	0°~+45°C
Installation	to use with driver
Dimensions (mm)	146.5 x 46.8 x 40.8
Battery	LiFePO4 6.4V3200mAh
Charge	24 hours
Discharge	>3 hours

CERTIFICATIONS



PRODUCT INFORMATION





WIRELESS SWITCHES

The Pure Lighting Wireless Switch, paired with a receiver to give you the ideal lighting control solution; reducing install time and overall costs. This switch is not limited to lighting, it is widely used in the industrial and commercial market in control circuits, VSD's and soft starters. This product has no limits!

188 PURE Wireless Switches

PURE WIRELESS SWITCH RANGE

Wireless Switches & Receiver



1-Gang Rocker Switch
PLEE154



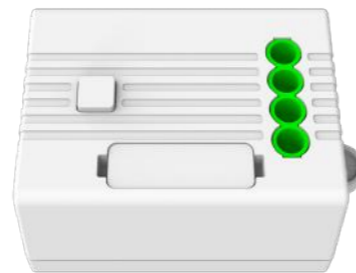
2-Gang Rocker Switch
PLEE0254



3-Gang Rocker Switch
PLEE354

FEATURES

- Wireless - No wires required between the switch and the receiving controller
- Simple to install and move - The switch can be easily fixed onto any suitable surface and is easy to relocate to a more convenient location as required
- Water resistant - Designed to cope with areas where moisture is present
- Durable - Long life expectancy as no reliance on battery technology
- Eco friendly and cost saving
- No battery required - reducing running costs and avoiding maintenance



Wireless Receiver
PLERC302

TECHNICAL SPECIFICATIONS

Product	Wireless Switch / Receiver
Switch Colour	White
Range	80m Outdoors / 20m Indoors
Lifespan (hrs)	>100000
Dimensions (mm)	86 x 86 x15
Frequency	RF 433MHz
Capacity	Up to 10 Switches

PURE

LIGHTING

All images and information in this publication are intended as a guide to the actual product. Specifications may vary from time to time as products improve so please check with your PURE Sales Representative for up-to-date spec sheets and availability. Custom variations of certain products will result in longer lead times.

Information subject to change without notification.
Product Catalogue 2025

© PURE LED Lighting New Zealand Limited, 2025

PURE

INNOVATION FOR LIFE

Australia

+61 754 150 459
sales@pureinnovate.com.au
pureinnovate.com.au

New Zealand

+64 7 394 6112
sales@purelighting.co.nz
purelighting.co.nz